

VN2R1P Rabbit pAb

CatalogNo: YT4886

| Key Features

Host Species

- Rabbit

Reactivity

- Human,Rat,Mouse,

Applications

- WB,IF,ELISA

MW

- 83kD (Observed)

Isotype

- IgG

| Recommended Dilution Ratios

WB 1:500-1:2000

IF 1:200-1:1000

ELISA 1:10000

Not yet tested in other applications.

| Storage

Storage*

-15°C to -25°C/1 year(Do not lower than -25°C)

Formulation

Liquid in PBS containing 50% glycerol, 0.5% BSA and 0.02% sodium azide.

| Basic Information

Clonality

Polyclonal

| Immunogen Information

Immunogen

The antiserum was produced against synthesized peptide derived from human CASRL1.
AA range:400-449

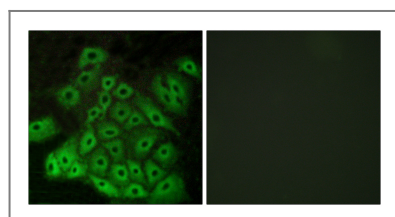
Specificity

VN2R1P Polyclonal Antibody detects endogenous levels of VN2R1P protein.

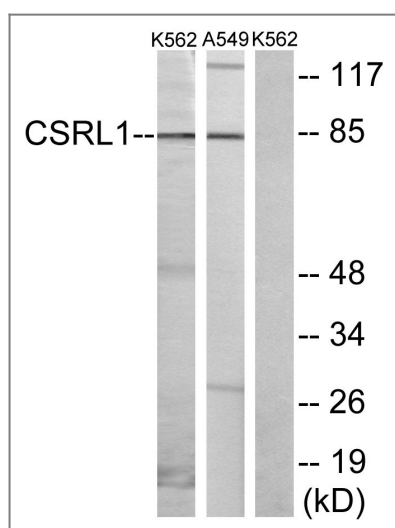
| Target Information

Gene name	CASRL1		
Protein Name	Putative calcium-sensing receptor-like 1		
	Organism	Gene ID	UniProt ID
	Human	344760;	Q8NGV9;

Validation Data



Immunofluorescence analysis of A549 cells, using CSRL1 Antibody. The picture on the right is blocked with the synthesized peptide.



Western blot analysis of lysates from K562 cells and A549 cells, using CSRL1 Antibody. The lane on the right is blocked with the synthesized peptide.

Contact information

Orders: order.cn@immunoway.com
 Support: support.cn@immunoway.com
 Telephone: 400-8787-807(China)
 Website: <http://www.immunoway.com.cn>
 Address: 2200 Ringwood Ave San Jose, CA 95131 USA



Please scan the QR code
 to access additional
 product information:
VN2R1P Rabbit pAb