

VEGI Rabbit pAb

CatalogNo: YT4873

Key Features

Host Species

- Rabbit

Reactivity

- Human, Mouse, Rat

Applications

- WB, IF, ELISA

MW

- 20kD (Observed)

Isotype

- IgG

Recommended Dilution Ratios

WB 1:500-1:2000

IF 1:200-1:1000

ELISA 1:20000

Not yet tested in other applications.

Storage

Storage*

-15°C to -25°C/1 year (Do not lower than -25°C)

Formulation

Liquid in PBS containing 50% glycerol, 0.5% BSA and 0.02% sodium azide.

Basic Information

Clonality

Polyclonal

Immunogen Information

Immunogen

The antiserum was produced against synthesized peptide derived from human TNFSF15. AA range: 181-230

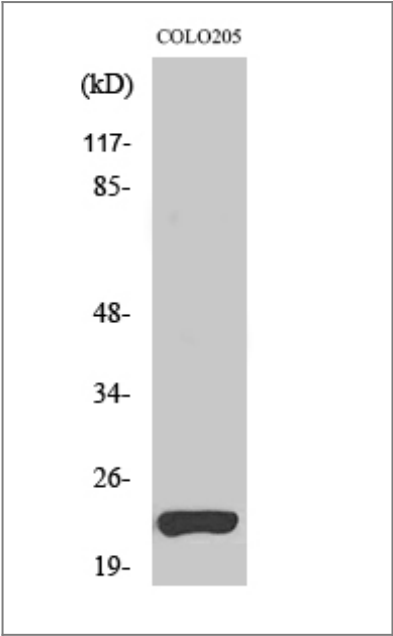
Specificity

VEGI Polyclonal Antibody detects endogenous levels of VEGI protein.

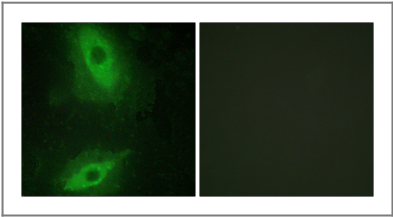
Target Information

| | | | |
|-----------------------|---|------------------------|--------------------------|
| Gene name | TNFSF15 | | |
| Protein Name | Tumor necrosis factor ligand superfamily member 15 | | |
| | Organism | Gene ID | UniProt ID |
| | Human | 9966 ; | O95150 ; |
| | Mouse | | Q5UBV8 ; |
| Cellular Localization | Membrane ; Single-pass type II membrane protein .; [Tumor necrosis factor ligand superfamily member 15, secreted form]: Secreted. | | |
| Tissue specificity | Specifically expressed in endothelial cells. Detected in monocytes, placenta, lung, liver, kidney, skeletal muscle, pancreas, spleen, prostate, small intestine and colon. | | |
| Function | Function:Receptor for TNFRSF25 and TNFRSF6B. Mediates activation of NF-kappa-B. Inhibits vascular endothelial growth and angiogenesis (in vitro). Promotes activation of caspases and apoptosis.,induction:Up-regulated by IL-1-alpha and TNF-alpha.,similarity:Belongs to the tumor necrosis factor family.,subunit:Homotrimer.,tissue specificity:Specifically expressed in endothelial cells. Detected in monocytes, placenta, lung, liver, kidney, skeletal muscle, pancreas, spleen, prostate, small intestine and colon., | | |

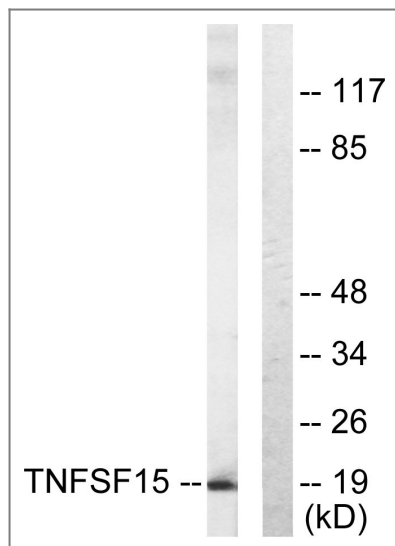
| Validation Data



Western Blot analysis of various cells using VEGI Polyclonal Antibody. Secondary antibody(catalog#:RS0002) was diluted at 1:20000



Immunofluorescence analysis of HeLa cells, using TNFSF15 Antibody. The picture on the right is blocked with the synthesized peptide.



Western blot analysis of lysates from COLO205 cells, using TNFSF15 Antibody. The lane on the right is blocked with the synthesized peptide.

Contact information

Orders: order.cn@immunoway.com
 Support: support.cn@immunoway.com
 Telephone: 400-8787-807(China)
 Website: <http://www.immunoway.com.cn>
 Address: 2200 Ringwood Ave San Jose, CA 95131 USA



Please scan the QR code to access additional product information:
VEGI Rabbit pAb

For Research Use Only. Not for Use in Diagnostic Procedures.

[Antibody](#) | [ELISA Kits](#) | [Protein](#) | [Reagents](#)