

VAV1 Rabbit pAb

CatalogNo: YT4862

Key Features

Host Species

- Rabbit

Reactivity

- Human,Mouse,Rat

Applications

- WB,IHC,IF,ELISA

MW

- 100kD (Observed)

Isotype

- IgG

Storage

Storage* -15°C to -25°C/1 year (Do not lower than -25°C)

Formulation Liquid in PBS containing 50% glycerol, 0.5% BSA and 0.02% sodium azide.

Recommended Dilution Ratios

WB 1:500-1:2000

IHC 1:100-1:300

ELISA 1:5000

IF 1:50-200

Basic Information

Clonality Polyclonal

Immunogen Information

Immunogen Synthesized peptide derived from Vav . at AA range: 110-190

Specificity Vav Polyclonal Antibody detects endogenous levels of Vav protein.

Target Information

Gene name VAV1

Protein Name Proto-oncogene vav

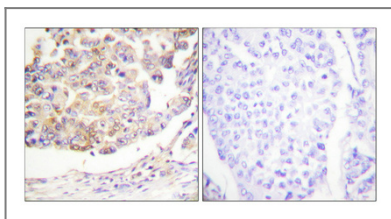
Organism	Gene ID	UniProt ID
Human	7409;	P15498;
Mouse	22324;	P27870;
Rat		P54100;

Cellular Localization intracellular ,cytosol ,plasma membrane ,cell-cell junction ,

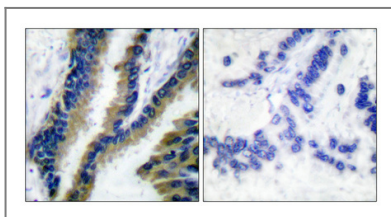
Tissue specificity Widely expressed in hematopoietic cells but not in other cell types.

Function Domain:The DH domain is involved in interaction with CCPG1. ,Function:Couples tyrosine kinase signals with the activation of the Rho/Rac GTPases , thus leading to cell differentiation and/or proliferation. ,miscellaneous:'Vav' stands for the sixth letter of the Hebrew alphabet. ,PTM:Phosphorylated on tyrosine residues. ,similarity:Contains 1 CH (calponin-homology) domain. ,similarity:Contains 1 DH (DBL-homology) domain. ,similarity:Contains 1 PH domain. ,similarity:Contains 1 phorbol-ester/DAG-type zinc finger. ,similarity:Contains 1 SH2 domain. ,similarity:Contains 2 SH3 domains. ,subunit:May interact with CCPG1 (By similarity) . Interacts with APS , DOCK2 , GRB2 , GRB3 , DOCK2 , SLA and ZNF655/VIK. Interacts with SIAH2; without leading to its degradation. Associates with BLNK , PLCG1 , GRB2 and NCK1 in a B-cell antigen receptor-dependent fashion. Interacts with CBLB; which inhibits tyrosine phosphorylation and down-regulates activity. Interacts with SHB and CLNK. ,tissue specificity:Widely expressed in hematopoietic cells but not in other cell types. ,

Validation Data



Immunohistochemical analysis of paraffin-embedded Human breast cancer. Antibody was diluted at 1:100 (4°C overnight). High-pressure and temperature Tris-EDTA,pH8.0 was used for antigen retrieval. Negative control (right) obtained from antibody was pre-absorbed by immunogen peptide.



Immunohistochemical analysis of paraffin-embedded Human lung cancer. Antibody was diluted at 1:100 (4°C overnight). High-pressure and temperature Tris-EDTA,pH8.0 was used for antigen retrieval. Negative control (right) obtained from antibody was pre-absorbed by immunogen peptide.

Contact information

Orders: order.cn@immunoway.com
Support: support.cn@immunoway.com
Telephone: 400-8787-807(China)
Website: <http://www.immunoway.com.cn>
Address: 2200 Ringwood Ave San Jose, CA 95131 USA



Please scan the QR code
to access additional
product information:
VAV1 Rabbit pAb

For Research Use Only. Not for Use in Diagnostic Procedures.

[Antibody](#) | [ELISA Kits](#) | [Protein](#) | [Reagents](#)