

## V-ATPase H Rabbit pAb

CatalogNo: YT4861

### Key Features

#### Host Species

- Rabbit

#### Reactivity

- Human, Mouse

#### Applications

- WB, IHC, IF, ELISA

#### MW

- 55kD (Observed)

#### Isotype

- IgG

### Recommended Dilution Ratios

**WB 1:500-1:2000**

**IHC 1:100-1:300**

**ELISA 1:20000**

**IF 1:50-200**

### Storage

#### Storage\*

-15°C to -25°C/1 year (Do not lower than -25°C)

#### Formulation

Liquid in PBS containing 50% glycerol, 0.5% BSA and 0.02% sodium azide.

### Basic Information

#### Clonality

Polyclonal

### Immunogen Information

#### Immunogen

The antiserum was produced against synthesized peptide derived from human ATP6V1H. AA range: 341-390

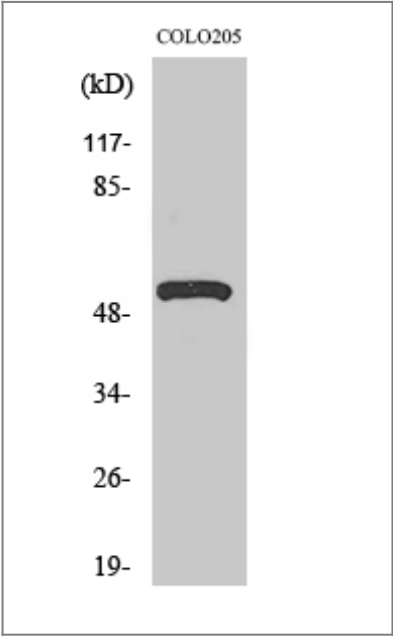
#### Specificity

V-ATPase H Polyclonal Antibody detects endogenous levels of V-ATPase H protein.

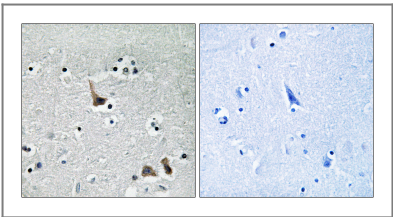
### Target Information

Gene name	ATP6V1H		
Protein Name	V-type proton ATPase subunit H		
	Organism	Gene ID	UniProt ID
	Human	<a href="#">51606</a> ;	<a href="#">Q9UI12</a> ;
	Mouse	<a href="#">108664</a> ;	<a href="#">Q8BVE3</a> ;
Cellular Localization	Cytoplasmic vesicle, clathrin-coated vesicle membrane ; Peripheral membrane protein .		
Tissue specificity	Widely expressed.		
Function	Function:Subunit of the peripheral V1 complex of vacuolar ATPase. Subunit H activates the ATPase activity of the enzyme and couples ATPase activity to proton flow. Vacuolar ATPase is responsible for acidifying a variety of intracellular compartments in eukaryotic cells, thus providing most of the energy required for transport processes in the vacuolar system (By similarity). Involved in the endocytosis mediated by clathrin-coated pits, required for the formation of endosomes.,similarity:Belongs to the V-ATPase H subunit family.,subunit:V-ATPase is an heteromultimeric enzyme composed of a peripheral catalytic V1 complex (components A to H) attached to an integral membrane V0 proton pore complex (components: a, c, c', c'' and d). Interacts with HIV-1 Nef protein and AP2M1.,tissue specificity:Widely expressed.,		

Validation Data



Western Blot analysis of various cells using V-ATPase H Polyclonal Antibody. Secondary antibody(catalog#:RS0002) was diluted at 1:20000



Immunohistochemistry analysis of paraffin-embedded human brain tissue, using ATP6V1H Antibody. The picture on the right is blocked with the synthesized peptide.

## | Contact information

Orders: order.cn@immunoway.com  
Support: support.cn@immunoway.com  
Telephone: 400-8787-807(China)  
Website: <http://www.immunoway.com.cn>  
Address: 2200 Ringwood Ave San Jose, CA 95131 USA



Please scan the QR code  
to access additional  
product information:  
**V-ATPase H Rabbit  
pAb**

---

For Research Use Only. Not for Use in Diagnostic Procedures.

[Antibody](#) | [ELISA Kits](#) | [Protein](#) | [Reagents](#)