

VAMP-1/2/3 Rabbit pAb

CatalogNo: YT4850

Key Features

Host Species

- Rabbit

Reactivity

- Human, Mouse, Rat

Applications

- WB, IHC, IF, ELISA

MW

- 13kD (Observed)

Isotype

- IgG

Storage

Storage* -15°C to -25°C/1 year (Do not lower than -25°C)

Formulation Liquid in PBS containing 50% glycerol, 0.5% BSA and 0.02% sodium azide.

Recommended Dilution Ratios

WB 1:500-2000

IHC 1:100-1:300

ELISA 1:10000

IF 1:50-200

Basic Information

Clonality Polyclonal

Immunogen Information

Immunogen The antiserum was produced against synthesized peptide derived from human VAMP-1/2/3. AA range: 21-70

Specificity VAMP-1/2/3 Polyclonal Antibody detects endogenous levels of VAMP-1/2/3 protein.

Target Information

Gene name VAMP1/VAMP2/VAMP3

Protein Name Vesicle-associated membrane protein 1/2/3

| Organism | Gene ID | UniProt ID |
|----------|-------------------------------------------------------------------------|----------------------------------------------------------------------------|
| Human | 6843 ; 6844 ; 9341 ; | P23763 ; P63027 ; Q15836 ; |
| Mouse | 22317 ; 22318 ; 22319 ; | |
| Rat | 25624 ; 24803 ; 29528 ; | Q63666 ; P63045 ; P63025 ; |

Cellular Localization

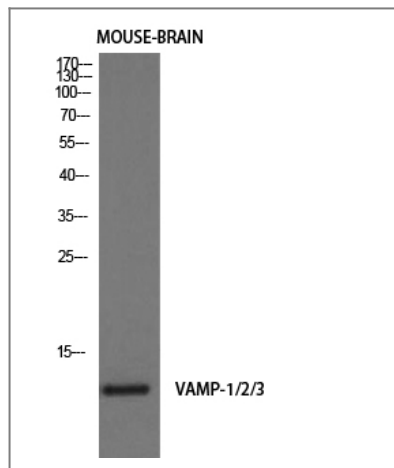
[Isoform 1]: Cytoplasmic vesicle, secretory vesicle, synaptic vesicle membrane ; Single-pass type IV membrane protein . Cell junction, synapse, synaptosome . ; [Isoform 2]: Cytoplasmic vesicle membrane ; Single-pass type IV membrane protein . Cell junction, synapse, synaptosome . ; [Isoform 3]: Mitochondrion outer membrane; Single-pass type IV membrane protein .

Tissue specificity Nervous system, skeletal muscle and adipose tissue.

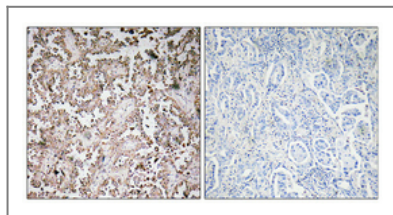
Function

Function:Involved in the targeting and/or fusion of transport vesicles to their target membrane.,similarity:Belongs to the synaptobrevin family.,similarity:Contains 1 v-SNARE coiled-coil homology domain.,subunit:Interacts with VAPA and VAPB.,tissue specificity:Nervous system, skeletal muscle and adipose tissue.,

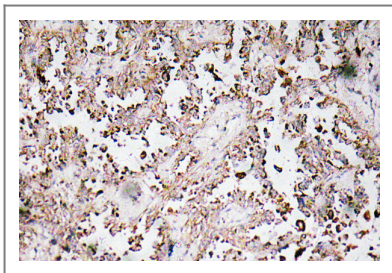
Validation Data



Western Blot analysis of mouse-brain cells using VAMP-1/2/3 Polyclonal Antibody diluted at 1:1000. Secondary antibody(catalog#:RS0002) was diluted at 1:20000



Immunohistochemical analysis of paraffin-embedded Human lung cancer. Antibody was diluted at 1:100(4° overnight). High-pressure and temperature Tris-EDTA,pH8.0 was used for antigen retrieval. Negative contrl (right) obtaned from antibody was pre-absorbed by immunogen peptide.



Immunohistochemistry analysis of VAMP-1/2/3 antibody in paraffin-embedded human lung carcinoma tissue.

| Contact information

Orders: order.cn@immunoway.com
Support: support.cn@immunoway.com
Telephone: 400-8787-807(China)
Website: <http://www.immunoway.com.cn>
Address: 2200 Ringwood Ave San Jose, CA 95131 USA



Please scan the QR code to access additional product information:
VAMP-1/2/3 Rabbit pAb

For Research Use Only. Not for Use in Diagnostic Procedures.

[Antibody](#) | [ELISA Kits](#) | [Protein](#) | [Reagents](#)