

## USP45 Rabbit pAb

CatalogNo: YT4842

### Key Features

#### Host Species

- Rabbit

#### Reactivity

- Human, Mouse, Rat

#### Applications

- WB, ELISA

#### MW

- 90kD (Observed)

#### Isotype

- IgG

### Recommended Dilution Ratios

**WB 1:500-1:2000**

**ELISA 1:10000**

**Not yet tested in other applications.**

### Storage

**Storage\*** -15°C to -25°C/1 year (Do not lower than -25°C)

**Formulation** Liquid in PBS containing 50% glycerol, 0.5% BSA and 0.02% sodium azide.

### Basic Information

**Clonality** Polyclonal

### Immunogen Information

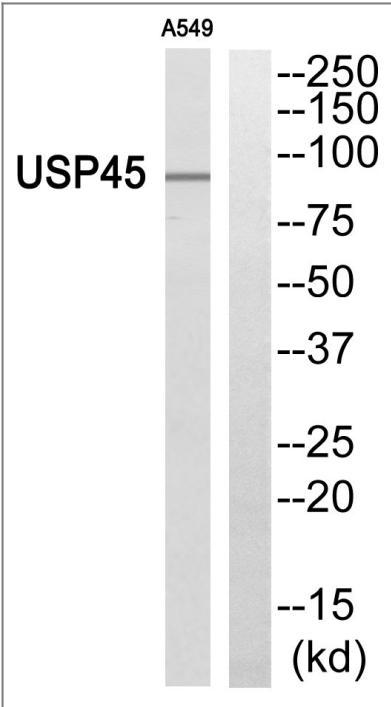
**Immunogen** The antiserum was produced against synthesized peptide derived from human USP45. AA range: 301-350

**Specificity** USP45 Polyclonal Antibody detects endogenous levels of USP45 protein.

### Target Information

Gene name	USP45		
Protein Name	Ubiquitin carboxyl-terminal hydrolase 45		
	Organism	Gene ID	UniProt ID
	Human	<a href="#">85015</a> ;	<a href="#">Q70EL2</a> ;
	Mouse	<a href="#">77593</a> ;	<a href="#">Q8K387</a> ;
Cellular Localization	Photoreceptor inner segment . Cytoplasm . Nucleus .		
Tissue specificity	Widely expressed. High expression is detected in the cerebellum. In the eye, it is expressed at high levels in the optic nerve, sclera and retina, with relatively low levels in the choroid, lens and retinal pigment epithelium (PubMed:30573563).		
Function	Catalytic activity:Ubiquitin C-terminal thioester + H(2)O = ubiquitin + a thiol.,similarity:Belongs to the peptidase C19 family.,similarity:Contains 1 UBP-type zinc finger.,tissue specificity:Broadly expressed, with highest levels in ovary, skeletal muscle and spleen.,		

| Validation Data



Western blot analysis of USP45 Antibody. The lane on the right is blocked with the USP45 peptide.

| Contact information

Orders: order.cn@immunoway.com  
Support: support.cn@immunoway.com  
Telephone: 400-8787-807(China)  
Website: <http://www.immunoway.com.cn>  
Address: 2200 Ringwood Ave San Jose, CA 95131 USA



Please scan the QR code  
to access additional  
product information:  
**USP45 Rabbit pAb**

---

For Research Use Only. Not for Use in Diagnostic Procedures.

[Antibody](#) | [ELISA Kits](#) | [Protein](#) | [Reagents](#)