

## USP42 Rabbit pAb

CatalogNo: YT4839

### | Key Features

#### Host Species

- Rabbit

#### Reactivity

- Human, Mouse, Rat

#### Applications

- WB, ELISA

#### MW

- 150kD (Observed)

#### Isotype

- IgG

### | Recommended Dilution Ratios

**WB 1:500-1:2000**

**ELISA 1:10000**

**Not yet tested in other applications.**

### | Storage

#### Storage\*

-15°C to -25°C/1 year (Do not lower than -25°C)

#### Formulation

Liquid in PBS containing 50% glycerol, 0.5% BSA and 0.02% sodium azide.

### | Basic Information

#### Clonality

Polyclonal

### | Immunogen Information

#### Immunogen

The antiserum was produced against synthesized peptide derived from human USP42. AA range: 251-300

#### Specificity

USP42 Polyclonal Antibody detects endogenous levels of USP42 protein.

### | Target Information

Gene name	USP42		
Protein Name	Ubiquitin carboxyl-terminal hydrolase 42		
	Organism	Gene ID	UniProt ID
	Human	<a href="#">84132;</a>	<a href="#">Q9H9J4;</a>
	Mouse	<a href="#">76800;</a>	<a href="#">B2RQC2;</a>
	Rat	<a href="#">288482;</a>	<a href="#">D3ZU96;</a>

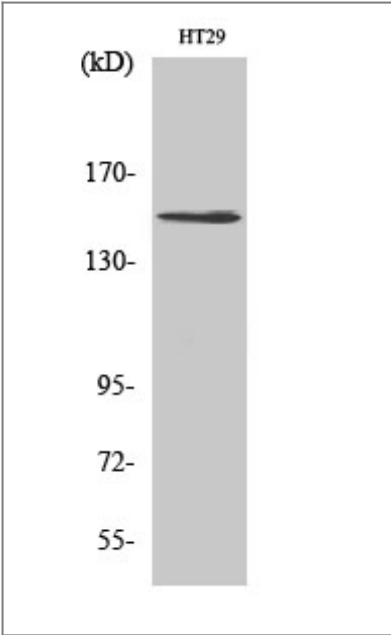
Tissue specificity

Broadly expressed.

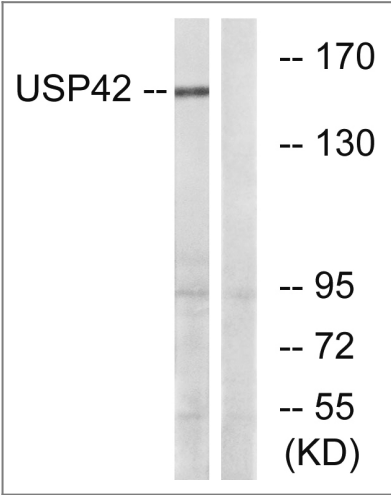
Function

Catalytic activity:Ubiquitin C-terminal thioester + H(2)O = ubiquitin + a thiol.,similarity:Belongs to the peptidase C19 family.,tissue specificity:Broadly expressed.,

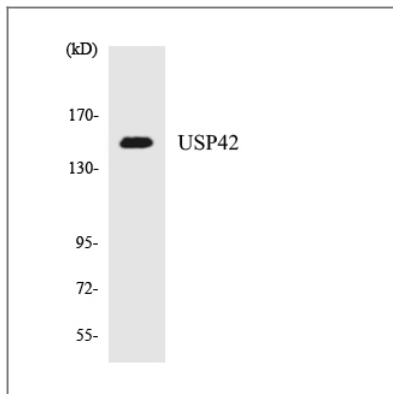
Validation Data



Western Blot analysis of various cells using USP42 Polyclonal Antibody. Secondary antibody(catalog#:RS0002) was diluted at 1:20000



Western blot analysis of lysates from HT-29 cells, using USP42 Antibody. The lane on the right is blocked with the synthesized peptide.



Western blot analysis of the lysates from HeLa cells using USP42 antibody.

## Contact information

Orders: [order.cn@immunoway.com](mailto:order.cn@immunoway.com)  
Support: [support.cn@immunoway.com](mailto:support.cn@immunoway.com)  
Telephone: 400-8787-807(China)  
Website: <http://www.immunoway.com.cn>  
Address: 2200 Ringwood Ave San Jose, CA 95131 USA



Please scan the QR code  
to access additional  
product information:  
**USP42 Rabbit pAb**

For Research Use Only. Not for Use in Diagnostic Procedures.

[Antibody](#) | [ELISA Kits](#) | [Protein](#) | [Reagents](#)