

USP24 Rabbit pAb

CatalogNo: YT4833

Key Features

Host Species

- Rabbit

Reactivity

- Human, Mouse

Applications

- IHC, IF, ELISA

MW

- 211kD (Calculated)

Isotype

- IgG

Recommended Dilution Ratios

IHC 1:100-1:300

ELISA 1:10000

IF 1:50-200

Storage

Storage*

-15°C to -25°C/1 year (Do not lower than -25°C)

Formulation

Liquid in PBS containing 50% glycerol, 0.5% BSA and 0.02% sodium azide.

Basic Information

Clonality

Polyclonal

Immunogen Information

Immunogen

The antiserum was produced against synthesized peptide derived from human USP24. AA range: 21-70

Specificity

USP24 Polyclonal Antibody detects endogenous levels of USP24 protein.

Target Information

Gene name USP24

Protein Name Ubiquitin carboxyl-terminal hydrolase 24

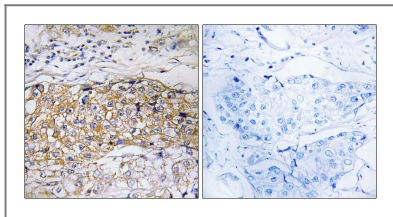
Organism	Gene ID	UniProt ID
Human	23358;	Q9UPU5;
Mouse	329908;	B1AY13;

Cellular Localization cytoplasm,

Tissue specificity Brain,Epithelium,Placenta,Platelet,T-cell,

Function Catalytic activity:Ubiquitin C-terminal thioester + H(2)O = ubiquitin + a thiol.,Function:Involved in the ubiquitin-dependent proteolytic pathway in conjunction with the 26S proteasome.,PTM:Phosphorylated upon DNA damage, probably by ATM or ATR.,similarity:Belongs to the peptidase C19 family.,similarity:Contains 1 UBA domain.,

| Validation Data



Immunohistochemistry analysis of paraffin-embedded human breast carcinoma tissue, using USP24 Antibody. The picture on the right is blocked with the synthesized peptide.

| Contact information

Orders: order.cn@immunoway.com
Support: support.cn@immunoway.com
Telephone: 400-8787-807(China)
Website: <http://www.immunoway.com.cn>
Address: 2200 Ringwood Ave San Jose, CA 95131 USA



Please scan the QR code to access additional product information:
USP24 Rabbit pAb

For Research Use Only. Not for Use in Diagnostic Procedures.

[Antibody](#) | [ELISA Kits](#) | [Protein](#) | [Reagents](#)