

UFD2 Rabbit pAb

CatalogNo: YT4818

Key Features

Host Species

- Rabbit

Reactivity

- Human, Mouse

Applications

- IHC, IF, ELISA

MW

- 146kD (Calculated)

Isotype

- IgG

Recommended Dilution Ratios

IHC 1:100-1:300

ELISA 1:5000

IF 1:50-200

Storage

Storage* -15°C to -25°C/1 year (Do not lower than -25°C)

Formulation Liquid in PBS containing 50% glycerol, 0.5% BSA and 0.02% sodium azide.

Basic Information

Clonality Polyclonal

Immunogen Information

Immunogen Synthesized peptide derived from the Internal region of human UFD2.

Specificity UFD2 Polyclonal Antibody detects endogenous levels of UFD2 protein.

Target Information

Gene name UBE4B

Protein Name Ubiquitin conjugation factor E4 B

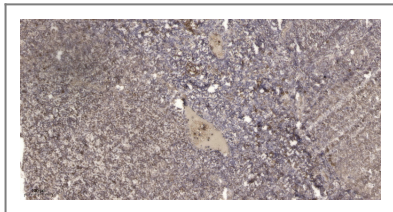
Organism	Gene ID	UniProt ID
Human	10277;	O95155;
Mouse	63958;	Q9ES00;

Cellular Localization Cytoplasm . Nucleus .

Tissue specificity Expressed in differentiated myotubes (at protein level) (PubMed:17369820). Highest expression in ovary, testis, heart and skeletal muscle (PubMed:11802788). Expression is low in colon, thymus and peripheral blood leukocytes (PubMed:11802788). Almost undetectable in lung and spleen (PubMed:11802788).

Function Function: Binds to the ubiquitin moieties of preformed conjugates and catalyzes ubiquitin chain assembly in conjunction with E1, E2, and E3., PTM: Proteolytically cleaved by caspases during apoptosis. Cleaved efficiently at Asp-123 by caspase-6 and granzyme B. Cleaved with approximately 10-fold less efficiency at Asp-109 by caspase-3 and caspase-7., similarity: Belongs to the ubiquitin conjugation factor E4 family., similarity: Contains 1 U-box domain., subunit: Interacts with VCP., tissue specificity: Highest expression in ovary, testis, heart and skeletal muscle. Expression is low in colon, thymus and peripheral blood leukocytes. Almost undetectable in lung and spleen.,

Validation Data



Immunohistochemical analysis of paraffin-embedded human tonsil. 1, Antibody was diluted at 1:200 (4° overnight). 2, Tris-EDTA, pH 9.0 was used for antigen retrieval. 3, Secondary antibody was diluted at 1:200 (room temperature, 45 min).

Contact information

Orders: order.cn@immunoway.com
Support: support.cn@immunoway.com
Telephone: 400-8787-807 (China)
Website: <http://www.immunoway.com.cn>
Address: 2200 Ringwood Ave San Jose, CA 95131 USA



Please scan the QR code to access additional product information:
UFD2 Rabbit pAb