

UDP-GlcDH Rabbit pAb

CatalogNo: YT4816

Key Features

Host Species

- Rabbit

Reactivity

- Human, Mouse, Rat

Applications

- WB, IHC, IF, ELISA

MW

- 55kD (Observed)

Isotype

- IgG

Recommended Dilution Ratios

WB 1:500-1:2000

IHC 1:100-1:300

ELISA 1:10000

IF 1:50-200

Storage

Storage*

-15°C to -25°C/1 year (Do not lower than -25°C)

Formulation

Liquid in PBS containing 50% glycerol, 0.5% BSA and 0.02% sodium azide.

Basic Information

Clonality

Polyclonal

Immunogen Information

Immunogen

The antiserum was produced against synthesized peptide derived from human UGDH. AA range: 391-440

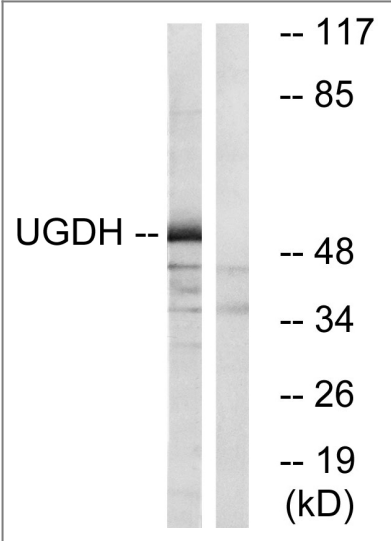
Specificity

UDP-GlcDH Polyclonal Antibody detects endogenous levels of UDP-GlcDH protein.

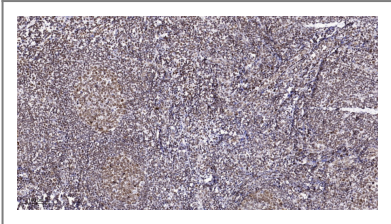
Target Information

Gene name	UGDH		
Protein Name	UDP-glucose 6-dehydrogenase		
	Organism	Gene ID	UniProt ID
	Human	7358 ;	O60701 ;
	Mouse	22235 ;	O70475 ;
	Rat	83472 ;	O70199 ;
Cellular Localization	nucleus,nucleoplasm,cytosol,extracellular exosome,		
Tissue specificity	Detected in heart, placenta, liver, pancreas, spleen, thymus, prostate, ovary, small intestine and colon (PubMed:9737970). Widely expressed (PubMed:9737970).		
Function	Catalytic activity:UDP-glucose + 2 NAD(+) + H(2)O = UDP-glucuronate + 2 NADH.,Function:Involved in the biosynthesis of glycosaminoglycans; hyaluronan, chondroitin sulfate, and heparan sulfate.,pathway:Nucleotide-sugar biosynthesis; UDP-glucuronic acid biosynthesis; UDP-glucuronic acid from UDP-glucose: step 1/1.,similarity:Belongs to the UDP-glucose/GDP-mannose dehydrogenase family.,subunit:Homohexamer.,		

| Validation Data



Western blot analysis of lysates from COLO cells, using UGDH Antibody. The lane on the right is blocked with the synthesized peptide.



Immunohistochemical analysis of paraffin-embedded human tonsil. 1, Antibody was diluted at 1:200(4° overnight). 2, Tris-EDTA,pH9.0 was used for antigen retrieval. 3,Secondary antibody was diluted at 1:200(room temperature, 45min).

| Contact information

Orders: order.cn@immunoway.com
Support: support.cn@immunoway.com
Telephone: 400-8787-807(China)
Website: <http://www.immunoway.com.cn>
Address: 2200 Ringwood Ave San Jose, CA 95131 USA



Please scan the QR code
to access additional
product information:
**UDP-GlcDH Rabbit
pAb**

For Research Use Only. Not for Use in Diagnostic Procedures.

[Antibody](#) | [ELISA Kits](#) | [Protein](#) | [Reagents](#)