

## TTK Rabbit pAb

CatalogNo: YT4772

Orthogonal Validated 

### Key Features

#### Host Species

- Rabbit

#### Reactivity

- Human, Mouse

#### Applications

- WB, IHC, IF, ELISA

#### MW

- 100kD (Observed)

#### Isotype

- IgG

### Recommended Dilution Ratios

WB 1:500-1:2000

IHC 1:100-1:300

ELISA 1:10000

IF 1:50-200

### Storage

**Storage\*** -15°C to -25°C/1 year (Do not lower than -25°C)**Formulation** Liquid in PBS containing 50% glycerol, 0.5% BSA and 0.02% sodium azide.

### Basic Information

**Clonality** Polyclonal

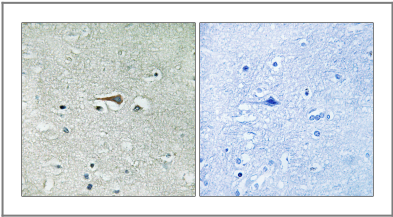
### Immunogen Information

**Immunogen** The antiserum was produced against synthesized peptide derived from human TTK. AA range: 642-691**Specificity** TTK Polyclonal Antibody detects endogenous levels of TTK protein.

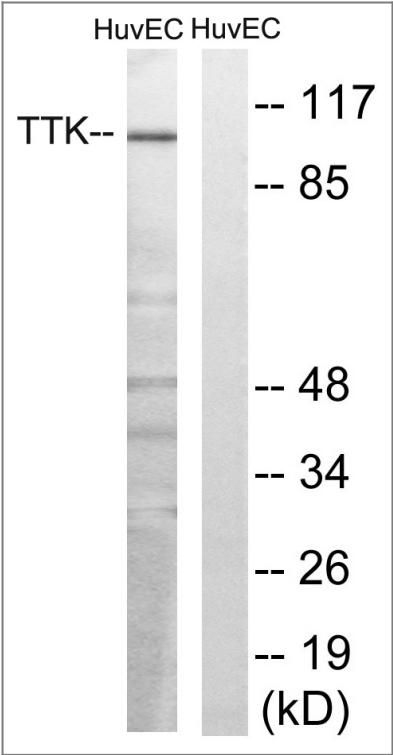
### Target Information

Gene name	TTK		
Protein Name	Dual specificity protein kinase TTK		
	Organism	Gene ID	UniProt ID
	Human	<a href="#">7272</a> ;	<a href="#">P33981</a> ;
	Mouse		<a href="#">P35761</a> ;
Cellular Localization	kinetochore,cytoplasm,spindle,membrane,		
Tissue specificity	Present in rapidly proliferating cell lines.		
Function	Catalytic activity:ATP + a protein = ADP + a phosphoprotein.,Function:Phosphorylates proteins on serine, threonine, and tyrosine. Probably associated with cell proliferation.,similarity:Belongs to the protein kinase superfamily.,similarity:Belongs to the protein kinase superfamily. Ser/Thr protein kinase family.,similarity:Contains 1 protein kinase domain.,tissue specificity:Present in rapidly proliferating cell lines.,		

| Validation Data



Immunohistochemistry analysis of paraffin-embedded human brain tissue, using TTK Antibody. The picture on the right is blocked with the synthesized peptide.



Western blot analysis of lysates from HUVEC cells, treated with etoposide 25uM 24H, using TTK Antibody. The lane on the right is blocked with the synthesized peptide.

## | Contact information

Orders: order.cn@immunoway.com  
Support: support.cn@immunoway.com  
Telephone: 400-8787-807(China)  
Website: <http://www.immunoway.com.cn>  
Address: 2200 Ringwood Ave San Jose, CA 95131 USA



Please scan the QR code  
to access additional  
product information:  
**TTK Rabbit pAb**

---

For Research Use Only. Not for Use in Diagnostic Procedures.

[Antibody](#) | [ELISA Kits](#) | [Protein](#) | [Reagents](#)