

## TSC-22 Rabbit pAb

CatalogNo: YT4758

### Key Features

#### Host Species

- Rabbit

#### Reactivity

- Human, Mouse, Rat

#### Applications

- WB, IHC, IF, ELISA

#### MW

- 16kD (Observed)

#### Isotype

- IgG

### Storage

**Storage\*** -15°C to -25°C/1 year (Do not lower than -25°C)

**Formulation** Liquid in PBS containing 50% glycerol, 0.5% BSA and 0.02% sodium azide.

### Recommended Dilution Ratios

**WB 1:500-1:2000**

**IHC 1:100-1:300**

**IF 1:200-1:1000**

**ELISA 1:20000**

**Not yet tested in other applications.**

### Basic Information

**Clonality** Polyclonal

### Immunogen Information

**Immunogen** The antiserum was produced against synthesized peptide derived from human TSC22D1. AA range:71-120

**Specificity** TSC-22 Polyclonal Antibody detects endogenous levels of TSC-22 protein.

---

## | Target Information

**Gene name** TSC22D1

**Protein Name** TSC22 domain family protein 1

Organism	Gene ID	UniProt ID
Human	<a href="#">8848;</a>	<a href="#">Q15714;</a>
Mouse	<a href="#">21807;</a>	<a href="#">P62500;</a>
Rat	<a href="#">498545;</a>	<a href="#">P62501;</a>

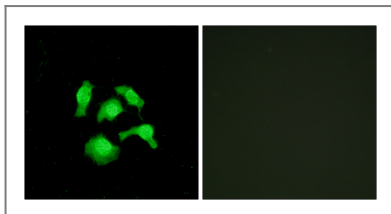
**Cellular Localization** Cytoplasm . Nucleus .

**Tissue specificity** Widely expressed in fetal and adult tissues.

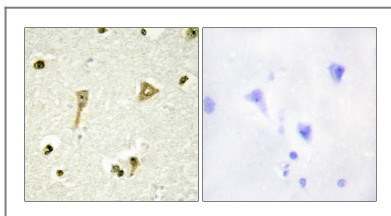
**Function** Function:Transcriptional repressor. Acts on the C-type natriuretic peptide (CNP) promoter.,induction:In aortic endothelial cells, induced by cytokines, including TGFB.,similarity:Belongs to the TSC-22/Dip/Bun family.,subunit:Homodimer or heterodimer. Can form an heterodimer with TSC22D4.,tissue specificity:Widely expressed in fetal and adult tissues.,

---

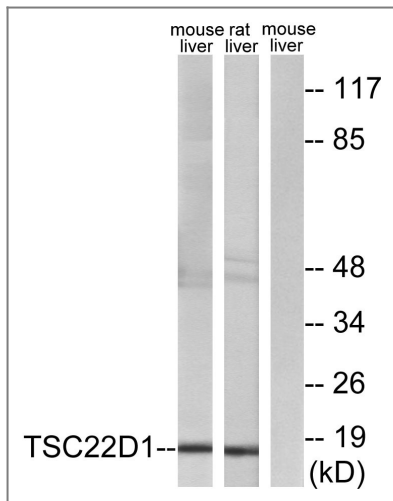
## | Validation Data



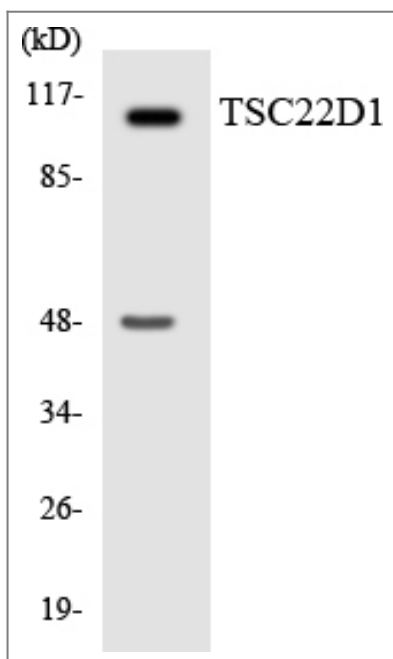
Immunofluorescence analysis of HepG2 cells, using TSC22D1 Antibody. The picture on the right is blocked with the synthesized peptide.



Immunohistochemistry analysis of paraffin-embedded human brain tissue, using TSC22D1 Antibody. The picture on the right is blocked with the synthesized peptide.



Western blot analysis of lysates from mouse liver and rat liver cells, using TSC22D1 Antibody. The lane on the right is blocked with the synthesized peptide.



Western blot analysis of the lysates from HepG2 cells using TSC22D1 antibody.

## Contact information

Orders: [order.cn@immunoway.com](mailto:order.cn@immunoway.com)  
 Support: [support.cn@immunoway.com](mailto:support.cn@immunoway.com)  
 Telephone: 400-8787-807(China)  
 Website: <http://www.immunoway.com.cn>  
 Address: 2200 Ringwood Ave San Jose, CA 95131 USA



Please scan the QR code to access additional product information:  
**TSC-22 Rabbit pAb**