

## TRAIL Rabbit pAb

CatalogNo: YT4721

### | Key Features

#### Host Species

- Rabbit

#### Reactivity

- Human, Mouse

#### Applications

- WB, IHC, IF, ELISA

#### MW

- 30kD (Observed)

#### Isotype

- IgG

### | Recommended Dilution Ratios

**WB 1:500-1:2000**

**IHC 1:100-1:300**

**IF 1:200-1:1000**

**ELISA 1:20000**

**Not yet tested in other applications.**

### | Storage

**Storage\*** -15°C to -25°C/1 year (Do not lower than -25°C)

**Formulation** Liquid in PBS containing 50% glycerol, 0.5% BSA and 0.02% sodium azide.

### | Basic Information

**Clonality** Polyclonal

### | Immunogen Information

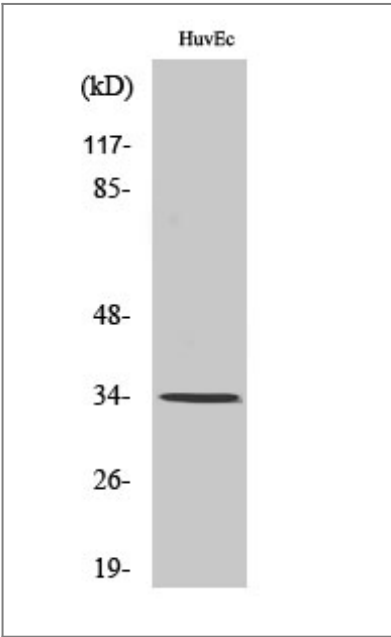
**Immunogen** The antiserum was produced against synthesized peptide derived from human TNFSF10. AA range: 31-80

**Specificity** TRAIL Polyclonal Antibody detects endogenous levels of TRAIL protein.

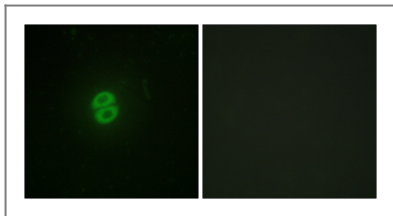
## | Target Information

Gene name	TNFSF10		
Protein Name	Tumor necrosis factor ligand superfamily member 10		
	Organism	Gene ID	UniProt ID
	Human	<a href="#">8743</a> ;	<a href="#">P50591</a> ;
	Mouse		<a href="#">P50592</a> ;
Cellular Localization	Cell membrane ; Single-pass type II membrane protein . Secreted . Exists both as membrane-bound and soluble form. .		
Tissue specificity	Widespread; most predominant in spleen, lung and prostate.		
Function	cofactor: Binds 1 zinc ion per trimer., Function: Cytokine that binds to TNFRSF10A/TRAILR1, TNFRSF10B/TRAILR2, TNFRSF10C/TRAILR3, TNFRSF10D/TRAILR4 and possibly also to TNFRSF11B/OPG. Induces apoptosis. Its activity may be modulated by binding to the decoy receptors TNFRSF10C/TRAILR3, TNFRSF10D/TRAILR4 and TNFRSF11B/OPG that cannot induce apoptosis., similarity: Belongs to the tumor necrosis factor family., subunit: Homotrimer., tissue specificity: Widespread; most predominant in spleen, lung and prostate.,		

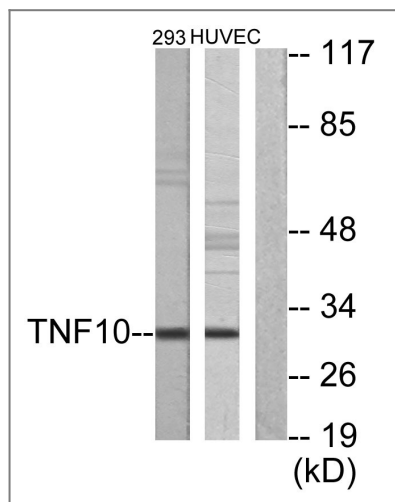
## | Validation Data



Western Blot analysis of various cells using TRAIL Polyclonal Antibody. Secondary antibody(catalog#:RS0002) was diluted at 1:20000



Immunofluorescence analysis of A549 cells, using CD253 Antibody. The picture on the right is blocked with the synthesized peptide.



Western blot analysis of lysates from HUVEC cells and 293 cells, using CD253 Antibody. The lane on the right is blocked with the synthesized peptide.

## Contact information

Orders: order.cn@immunoway.com  
 Support: support.cn@immunoway.com  
 Telephone: 400-8787-807(China)  
 Website: <http://www.immunoway.com.cn>  
 Address: 2200 Ringwood Ave San Jose, CA 95131 USA



Please scan the QR code to access additional product information:  
**TRAIL Rabbit pAb**

For Research Use Only. Not for Use in Diagnostic Procedures.

[Antibody](#) | [ELISA Kits](#) | [Protein](#) | [Reagents](#)