

## TRADD Rabbit pAb

CatalogNo: YT4716

### Key Features

#### Host Species

- Rabbit

#### Reactivity

- Human, Mouse, Monkey

#### Applications

- WB, IHC, IF, ELISA

#### MW

- 34kD (Observed)

#### Isotype

- IgG

### Recommended Dilution Ratios

**WB 1:500-1:2000**

**IHC 1:100-1:300**

**ELISA 1:10000**

**IF 1:50-200**

### Storage

#### Storage\*

-15°C to -25°C/1 year (Do not lower than -25°C)

#### Formulation

Liquid in PBS containing 50% glycerol, 0.5% BSA and 0.02% sodium azide.

### Basic Information

#### Clonality

Polyclonal

### Immunogen Information

#### Immunogen

The antiserum was produced against synthesized peptide derived from human TRADD. AA range: 251-300

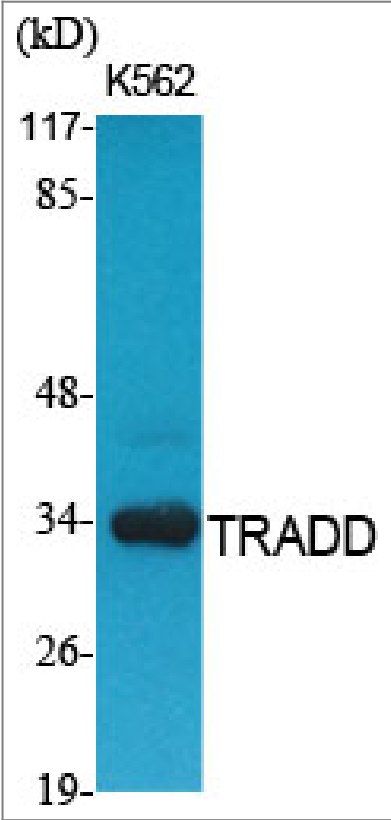
#### Specificity

TRADD Polyclonal Antibody detects endogenous levels of TRADD protein.

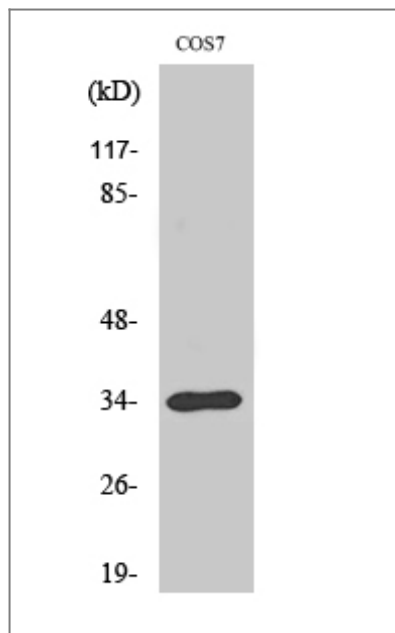
### Target Information

Gene name	TRADD		
Protein Name	Tumor necrosis factor receptor type 1-associated DEATH domain protein		
	Organism	Gene ID	UniProt ID
	Human	<a href="#">8717</a> ;	<a href="#">Q15628</a> ;
	Mouse	<a href="#">71609</a> ;	<a href="#">Q3U0V2</a> ;
Cellular Localization	Nucleus . Cytoplasm . Cytoplasm, cytoskeleton . Shuttles between the cytoplasm and the nucleus. .		
Tissue specificity	Found in all examined tissues.		
Function	Domain:Requires the intact DEATH domain to associate with TNFRSF1A/TNFR1.,Function:Adapter molecule for TNFRSF1A/TNFR1 that specifically associates with the cytoplasmic domain of activated TNFRSF1A/TNFR1 mediating its interaction with FADD. Overexpression of TRADD leads to two major TNF-induced responses, apoptosis and activation of NF-kappa-B.,similarity:Contains 1 death domain.,subunit:Heterodimer with TNFRSF1A/TNFR1. Interacts with DAB2IP, FADD, HIPK2, KRT14, KRT16, KRT17, KRT18, RIPK1, SQSTM1, TRAF1, TRAF2 and TRPC4AP.,tissue specificity:Found in all examined tissues.,		

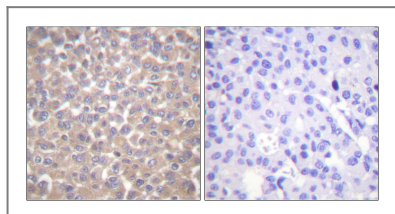
| Validation Data



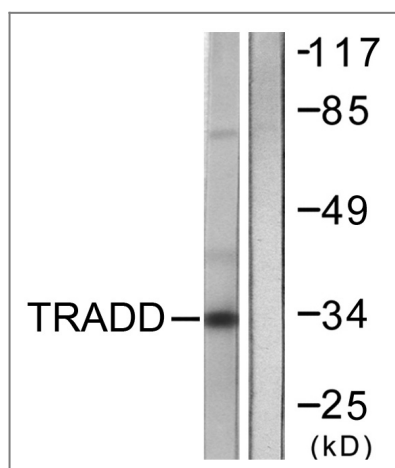
Western Blot analysis of various cells using TRADD Polyclonal Antibody. Secondary antibody(catalog#:RS0002) was diluted at 1:20000



Western Blot analysis of COS7 cells using TRADD Polyclonal Antibody. Secondary antibody(catalog#:RS0002) was diluted at 1:20000



Immunohistochemistry analysis of paraffin-embedded human breast carcinoma tissue, using TRADD Antibody. The picture on the right is blocked with the synthesized peptide.



Western blot analysis of lysates from COS7 cells, using TRADD Antibody. The lane on the right is blocked with the synthesized peptide.

## Contact information

Orders: order.cn@immunoway.com  
 Support: support.cn@immunoway.com  
 Telephone: 400-8787-807(China)  
 Website: <http://www.immunoway.com.cn>  
 Address: 2200 Ringwood Ave San Jose, CA 95131 USA



Please scan the QR code to access additional product information:  
**TRADD Rabbit pAb**