

TRAC-1 Rabbit pAb

CatalogNo: YT4715

Key Features

Host Species

- Rabbit

Reactivity

- Human, Mouse, Rat

Applications

- WB, IHC, IF, ELISA

MW

- 26kD (Observed)

Isotype

- IgG

Recommended Dilution Ratios

WB 1:500-1:2000

IHC 1:100-1:300

ELISA 1:10000

IF 1:50-200

Storage

Storage*

-15°C to -25°C/1 year (Do not lower than -25°C)

Formulation

Liquid in PBS containing 50% glycerol, 0.5% BSA and 0.02% sodium azide.

Basic Information

Clonality

Polyclonal

Immunogen Information

Immunogen

The antiserum was produced against synthesized peptide derived from human RNF125. AA range: 131-180

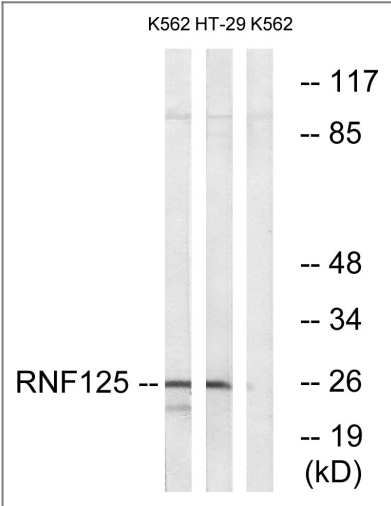
Specificity

TRAC-1 Polyclonal Antibody detects endogenous levels of TRAC-1 protein.

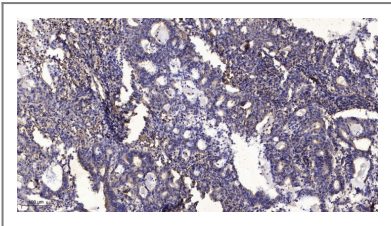
Target Information

| | | | |
|-----------------------|---|-------------------------|--------------------------|
| Gene name | RNF125 | | |
| Protein Name | E3 ubiquitin-protein ligase RNF125 | | |
| | Organism | Gene ID | UniProt ID |
| | Human | 54941 ; | Q96EQ8 ; |
| | Mouse | 67664 ; | Q9D9R0 ; |
| Cellular Localization | Golgi apparatus membrane ; Lipid-anchor . Shows a reticular staining pattern within the cell and is probably expressed at other intracellular membranes in addition to the Golgi membrane. Not detected at the plasma membrane. . | | |
| Tissue specificity | Predominantly expressed in lymphoid tissues, including bone marrow, spleen and thymus. Also weakly expressed in other tissues. Predominant in the CD4(+) and CD8(+) T-cells, suggesting that it is preferentially confined to T-cells. | | |
| Function | Function:E3 ubiquitin-protein ligase that acts as a positive regulator of T-cell activation. E3 ligase proteins mediate ubiquitination and subsequent proteasomal degradation of target proteins.,pathway:Protein modification; protein ubiquitination.,similarity:Contains 1 RING-type zinc finger.,tissue specificity:Predominantly expressed in lymphoid tissues, including bone marrow, spleen and thymus. Also weakly expressed in other tissues. Predominant in the CD4+ and CD8+ T-cells, suggesting that it is preferentially confined to T-cells., | | |

Validation Data



Western blot analysis of lysates from K562 and HT-29 cells, using RNF125 Antibody. The lane on the right is blocked with the synthesized peptide.



Immunohistochemical analysis of paraffin-embedded human Gastric adenocarcinoma. 1, Antibody was diluted at 1:200(4° overnight). 2, Tris-EDTA,pH9.0 was used for antigen retrieval. 3,Secondary antibody was diluted at 1:200(room temperature, 45min).

| Contact information

Orders: order.cn@immunoway.com
Support: support.cn@immunoway.com
Telephone: 400-8787-807(China)
Website: <http://www.immunoway.com.cn>
Address: 2200 Ringwood Ave San Jose, CA 95131 USA



Please scan the QR code
to access additional
product information:
TRAC-1 Rabbit pAb

For Research Use Only. Not for Use in Diagnostic Procedures.

[Antibody](#) | [ELISA Kits](#) | [Protein](#) | [Reagents](#)