

TP53INP2 Rabbit pAb

CatalogNo: YT4706

| Key Features

Host Species

- Rabbit

Reactivity

- Human, Mouse, Rat

Applications

- WB, IHC, IF, ELISA

MW

- 24kD (Calculated)
17kD (Observed)

Isotype

- IgG

| Recommended Dilution Ratios

WB 1:500-2000

IHC 1:100-1:300

IF 1:200-1:1000

ELISA 1:10000

Not yet tested in other applications.

| Storage

Storage* -15°C to -25°C/1 year (Do not lower than -25°C)

Formulation Liquid in PBS containing 50% glycerol, 0.5% BSA and 0.02% sodium azide.

| Basic Information

Clonality Polyclonal

| Immunogen Information

Immunogen The antiserum was produced against synthesized peptide derived from human TP53INP2. AA range: 1-50

Specificity TP53INP2 Polyclonal Antibody detects endogenous levels of TP53INP2 protein.

Target Information

Gene name TP53INP2

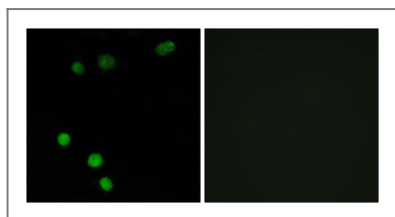
Protein Name Tumor protein p53-inducible nuclear protein 2

Organism	Gene ID	UniProt ID
Human	58476 ;	Q8IXH6 ;
Mouse	68728 ;	Q8CFU8 ;
Rat		Q8CHM3 ;

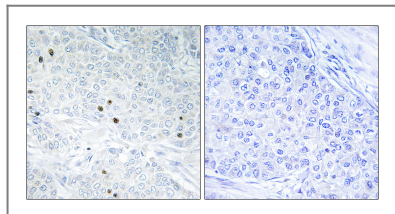
Cellular Localization Cytoplasm, cytosol. Nucleus. Nucleus, PML body. Cytoplasmic vesicle, autophagosome. Shuttles between the nucleus and the cytoplasm, depending on cellular stress conditions, and re-localizes to autophagosomes on autophagy activation.

Tissue specificity Eye,Heart,

Validation Data



Immunofluorescence analysis of MCF7 cells, using TP53INP2 Antibody. The picture on the right is blocked with the synthesized peptide.



Immunohistochemistry analysis of paraffin-embedded human breast carcinoma tissue, using TP53INP2 Antibody. The picture on the right is blocked with the synthesized peptide.

Contact information

Orders: order.cn@immunoway.com
Support: support.cn@immunoway.com
Telephone: 400-8787-807(China)
Website: <http://www.immunoway.com.cn>
Address: 2200 Ringwood Ave San Jose, CA 95131 USA



Please scan the QR code to access additional product information:
TP53INP2 Rabbit pAb

