

## Topoisomerase II $\alpha$ Rabbit pAb

CatalogNo: YT4701

### Key Features

#### Host Species

- Rabbit

#### Reactivity

- Human, Monkey

#### Applications

- WB, IHC, IF, ELISA

#### MW

- 174kD (Observed)

#### Isotype

- IgG

### Storage

**Storage\*** -15°C to -25°C/1 year (Do not lower than -25°C)

**Formulation** Liquid in PBS containing 50% glycerol, 0.5% BSA and 0.02% sodium azide.

### Recommended Dilution Ratios

**WB 1:500-1:2000**

**IHC 1:100-1:300**

**IF 1:200-1:1000**

**ELISA 1:20000**

**Not yet tested in other applications.**

### Basic Information

**Clonality** Polyclonal

### Immunogen Information

**Immunogen** The antiserum was produced against synthesized peptide derived from human TOP2A. AA range:1-50

**Specificity** Topo II $\alpha$  Polyclonal Antibody detects endogenous levels of Topo II $\alpha$  protein.

---

## | Target Information

**Gene name** TOP2A TOP2

**Protein Name** DNA topoisomerase 2-alpha

Organism	Gene ID	UniProt ID
Human	<a href="#">7153</a> ;	<a href="#">P11388</a> ;
Mouse	<a href="#">21973</a> ;	<a href="#">Q01320</a> ;
Rat	<a href="#">360243</a> ;	<a href="#">P41516</a> ;

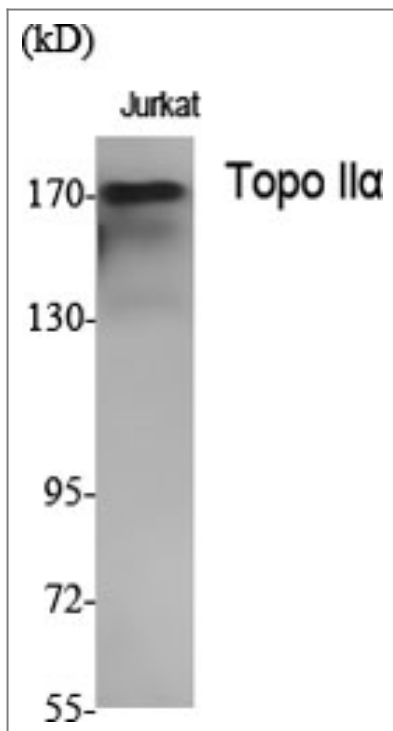
**Cellular Localization** Cytoplasm . Nucleus , nucleoplasm . Nucleus . Nucleus , nucleolus .

**Tissue specificity** Expressed in the tonsil , spleen , lymph node , thymus , skin , pancreas , testis , colon , kidney , liver , brain and lung (PubMed:9155056) . Also found in high-grade lymphomas , squamous cell lung tumors and seminomas (PubMed:9155056) .

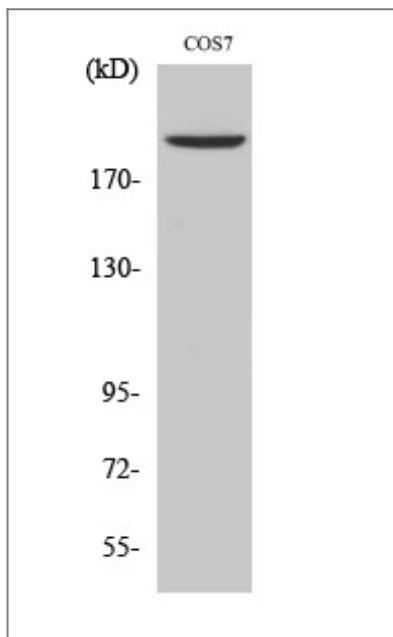
**Function** Catalytic activity:ATP-dependent breakage , passage and rejoining of double-stranded DNA. ,enzyme regulation:Specifically inhibited by the intercalating agent amsacrine. ,Function:Control of topological states of DNA by transient breakage and subsequent rejoining of DNA strands. Topoisomerase II makes double-strand breaks. ,miscellaneous:Eukaryotic topoisomerase I and II can relax both negative and positive supercoils , whereas prokaryotic enzymes relax only negative supercoils. ,PTM:Phosphorylation has no effect on catalytic activity. ,similarity:Belongs to the type II topoisomerase family. ,subcellular location:Generally located in the nucleoplasm. ,subunit:Homodimer. Interacts with COPS5. ,

---

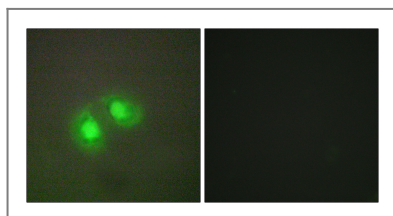
## | Validation Data



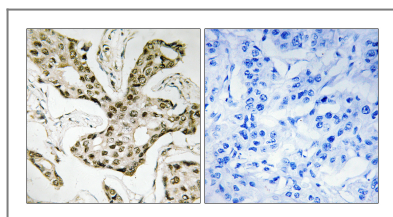
Western Blot analysis of various cells using Topo II $\alpha$  Polyclonal Antibody diluted at 1:1000. Secondary antibody (catalog#:RS0002) was diluted at 1:20000



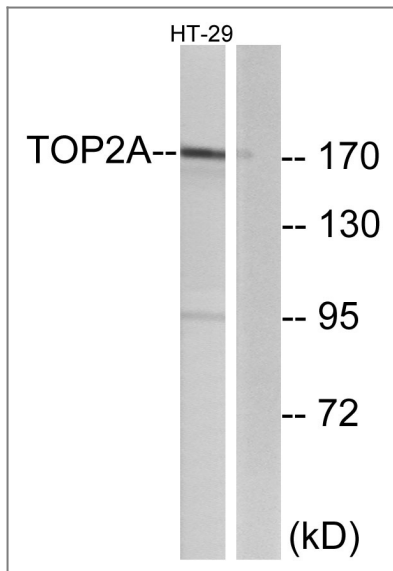
Western Blot analysis of 293 cells using Topo II $\alpha$  Polyclonal Antibody diluted at 1:1000. Secondary antibody (catalog#:RS0002) was diluted at 1:20000



Immunofluorescence analysis of A549 cells, using TOP2A Antibody. The picture on the right is blocked with the synthesized peptide.



Immunohistochemistry analysis of paraffin-embedded human liver carcinoma tissue, using TOP2A Antibody. The picture on the right is blocked with the synthesized peptide.



Western blot analysis of lysates from HT-29 cells, using TOP2A Antibody. The lane on the right is blocked with the synthesized peptide.

## Contact information

Orders: [order.cn@immunoway.com](mailto:order.cn@immunoway.com)  
Support: [support.cn@immunoway.com](mailto:support.cn@immunoway.com)  
Telephone: 400-8787-807(China)  
Website: <http://www.immunoway.com.cn>  
Address: 2200 Ringwood Ave San Jose, CA 95131 USA



Please scan the QR code to access additional product information:  
**Topoisomerase II $\alpha$**   
**Rabbit pAb**

For Research Use Only. Not for Use in Diagnostic Procedures.

[Antibody](#) | [ELISA Kits](#) | [Protein](#) | [Reagents](#)