

## TIEG-1/2 Rabbit pAb

CatalogNo: YT4652

### Key Features

#### Host Species

- Rabbit

#### Reactivity

- Human, Mouse, Rat

#### Applications

- IHC, IF, ELISA

#### MW

- 53kD (Calculated)

#### Isotype

- IgG

### Recommended Dilution Ratios

IHC 1:100-1:300

ELISA 1:5000

IF 1:50-200

### Storage

**Storage\*** -15°C to -25°C/1 year (Do not lower than -25°C)

**Formulation** Liquid in PBS containing 50% glycerol, 0.5% BSA and 0.02% sodium azide.

### Basic Information

**Clonality** Polyclonal

### Immunogen Information

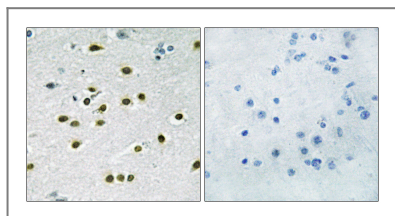
**Immunogen** The antiserum was produced against synthesized peptide derived from human KLF10/11. AA range: 391-440

**Specificity** TIEG-1/2 Polyclonal Antibody detects endogenous levels of TIEG-1/2 protein.

### Target Information

<b>Gene name</b>	KLF10/11		
<b>Protein Name</b>	Krueppel-like factor 10/11		
	<b>Organism</b>	<b>Gene ID</b>	<b>UniProt ID</b>
	Human	<a href="#">7071</a> ; <a href="#">8462</a> ;	<a href="#">Q13118</a> ; <a href="#">O14901</a> ;
	Mouse	<a href="#">21847</a> ; <a href="#">194655</a> ;	
	Rat	<a href="#">81813</a> ;	<a href="#">O08876</a> ;
<b>Cellular Localization</b>	Nucleus .		
<b>Tissue specificity</b>	Epithelium, Eye, Placenta,		
<b>Function</b>	Function: Transcriptional repressor involved in the regulation of cell growth. Inhibits cell growth. Binds to the consensus sequence 5'-GGTGTG-3'. Induction: By TGF-beta. PTM: Ubiquitinated; mediated by SIAH1 and leading to its subsequent proteasomal degradation. Similarity: Belongs to the Sp1 C2H2-type zinc-finger protein family. Similarity: Contains 3 C2H2-type zinc fingers.		

## Validation Data



Immunohistochemistry analysis of paraffin-embedded human brain tissue, using KLF10/11 Antibody. The picture on the right is blocked with the synthesized peptide.

## Contact information

Orders: [order.cn@immunoway.com](mailto:order.cn@immunoway.com)  
 Support: [support.cn@immunoway.com](mailto:support.cn@immunoway.com)  
 Telephone: 400-8787-807(China)  
 Website: <http://www.immunoway.com.cn>  
 Address: 2200 Ringwood Ave San Jose, CA 95131 USA



Please scan the QR code to access additional product information:  
**TIEG-1/2 Rabbit pAb**