

Thrombin Receptor Rabbit pAb

CatalogNo: YT4645

Orthogonal Validated 

Key Features

Host Species

- Rabbit

Reactivity

- Human, Mouse, Rat

Applications

- WB, IHC, IF, ELISA

MW

- 48kD (Observed)

Isotype

- IgG

Recommended Dilution Ratios

WB 1:500-1:2000**ELISA 1:5000****IF 1:50-200**

Storage

Storage* -15°C to -25°C/1 year (Do not lower than -25°C)**Formulation** Liquid in PBS containing 50% glycerol, 0.5% BSA and 0.02% sodium azide.

Basic Information

Clonality Polyclonal

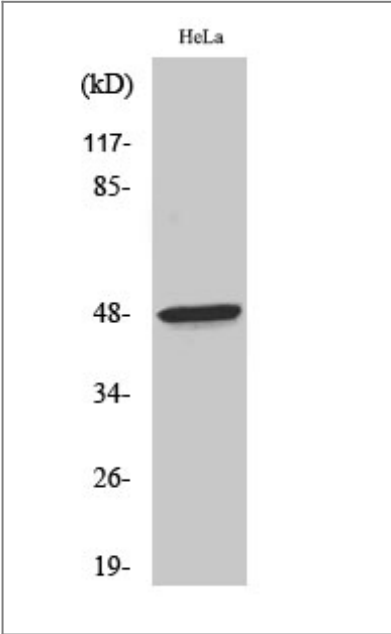
Immunogen Information

Immunogen The antiserum was produced against synthesized peptide derived from human Thrombin Receptor. AA range:10-59**Specificity** Thrombin R Polyclonal Antibody detects endogenous levels of Thrombin R protein.

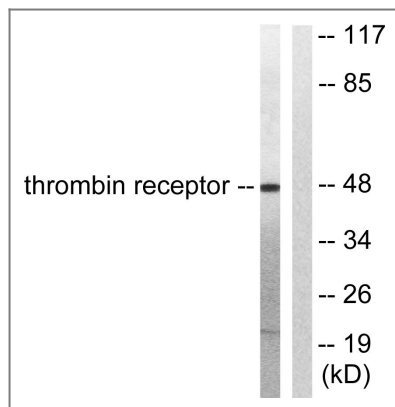
Target Information

Gene name	F2R		
Protein Name	Proteinase-activated receptor 1		
	Organism	Gene ID	UniProt ID
	Human	2149;	P25116;
	Mouse	14062;	P30558;
	Rat		P26824;
Cellular Localization	Cell membrane; Multi-pass membrane protein.		
Tissue specificity	Platelets and vascular endothelial cells.		
Function	Function:High affinity receptor for activated thrombin coupled to G proteins that stimulate phosphoinositide hydrolysis. May play a role in platelets activation and in vascular development.,PTM:A proteolytic cleavage generates a new N-terminus that functions as a tethered ligand.,PTM:Phosphorylated; probably mediating desensitization prior to the uncoupling and internalization of the receptor.,similarity:Belongs to the G-protein coupled receptor 1 family.,tissue specificity:Platelets and vascular endothelial cells.,		

| Validation Data



Western Blot analysis of various cells using Thrombin R Polyclonal Antibody



Western blot analysis of lysates from HeLa cells, treated with Nocodazole 1ug/ml 18h, using Thrombin Receptor Antibody. The lane on the right is blocked with the synthesized peptide.

Contact information

Orders: order.cn@immunoway.com
 Support: support.cn@immunoway.com
 Telephone: 400-8787-807(China)
 Website: <http://www.immunoway.com.cn>
 Address: 2200 Ringwood Ave San Jose, CA 95131 USA



Please scan the QR code to access additional product information:

Thrombin Receptor Rabbit pAb

For Research Use Only. Not for Use in Diagnostic Procedures.

[Antibody](#) | [ELISA Kits](#) | [Protein](#) | [Reagents](#)