

## THIK-2 Rabbit pAb

CatalogNo: YT4643

### Key Features

#### Host Species

- Rabbit

#### Reactivity

- Human, Mouse, Rat

#### Applications

- WB, ELISA, IHC

#### MW

- 47kD (Observed)

#### Isotype

- IgG

### Storage

**Storage\*** -15°C to -25°C/1 year (Do not lower than -25°C)

**Formulation** Liquid in PBS containing 50% glycerol, 0.5% BSA and 0.02% sodium azide.

### Recommended Dilution Ratios

**WB 1:500-2000**

**IHC 1:50-300**

**ELISA 1:2000-20000**

### Basic Information

**Clonality** Polyclonal

### Immunogen Information

**Immunogen** The antiserum was produced against synthesized peptide derived from human KCNK12. AA range:336-385

**Specificity** THIK-2 Polyclonal Antibody detects endogenous levels of THIK-2 protein.

### Target Information

**Gene name** KCNK12

**Protein Name** Potassium channel subfamily K member 12

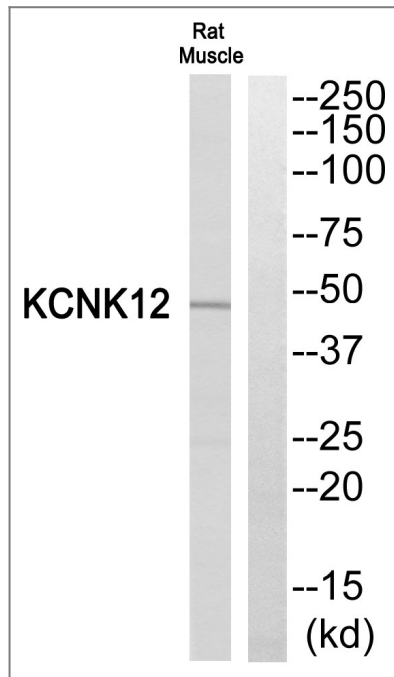
Organism	Gene ID	UniProt ID
Human	<a href="#">56660</a> ;	<a href="#">Q9HB15</a> ;
Rat	<a href="#">64119</a> ;	<a href="#">Q9ERS1</a> ;

**Cellular Localization** Membrane ; Multi-pass membrane protein .

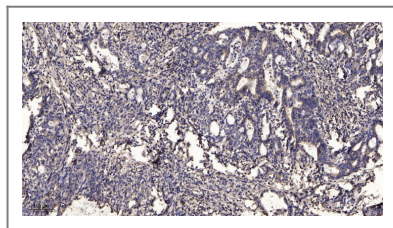
**Tissue specificity** Epithelium,PNS,

**Function** Function:Probable potassium channel subunit. No channel activity observed in heterologous systems. May need to associate with another protein to form a functional channel.,similarity:Belongs to the two pore domain potassium channel (TC 1.A.1.8) family.,subunit:Heterodimer .,

## Validation Data



Western blot analysis of KCNK12 Antibody. The lane on the right is blocked with the KCNK12 peptide.



Immunohistochemical analysis of paraffin-embedded human Gastric adenocarcinoma. 1, Antibody was diluted at 1:200(4° overnight). 2, Tris-EDTA,pH9.0 was used for antigen retrieval. 3,Secondary antibody was diluted at 1:200(room temperature, 45min).

## | Contact information

Orders: order.cn@immunoway.com  
Support: support.cn@immunoway.com  
Telephone: 400-8787-807(China)  
Website: <http://www.immunoway.com.cn>  
Address: 2200 Ringwood Ave San Jose, CA 95131 USA



Please scan the QR code  
to access additional  
product information:  
**THIK-2 Rabbit pAb**

---

For Research Use Only. Not for Use in Diagnostic Procedures.

[Antibody](#) | [ELISA Kits](#) | [Protein](#) | [Reagents](#)