

TEF Rabbit pAb

CatalogNo: YT4595

Key Features

Host Species

- Rabbit

Reactivity

- Human, Mouse, Rat

Applications

- WB, IHC, IF, ELISA

MW

- 45-55kD (Observed)

Isotype

- IgG

Recommended Dilution Ratios

WB 1:500-1:2000

IHC 1:100-1:300

ELISA 1:10000

IF 1:50-200

Storage

Storage*

-15°C to -25°C/1 year (Do not lower than -25°C)

Formulation

Liquid in PBS containing 50% glycerol, 0.5% BSA and 0.02% sodium azide.

Basic Information

Clonality

Polyclonal

Immunogen Information

Immunogen

The antiserum was produced against synthesized peptide derived from human TEF. AA range: 211-260

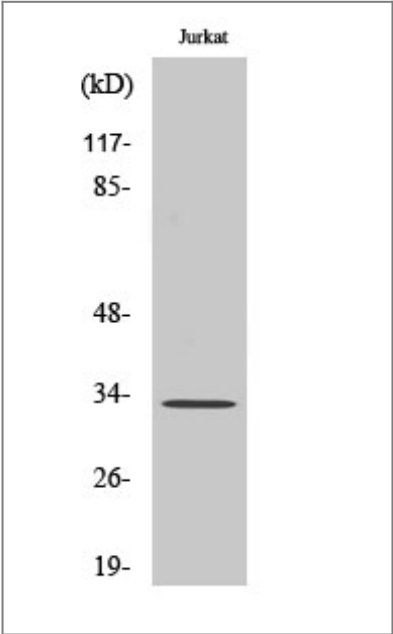
Specificity

TEF Polyclonal Antibody detects endogenous levels of TEF protein.

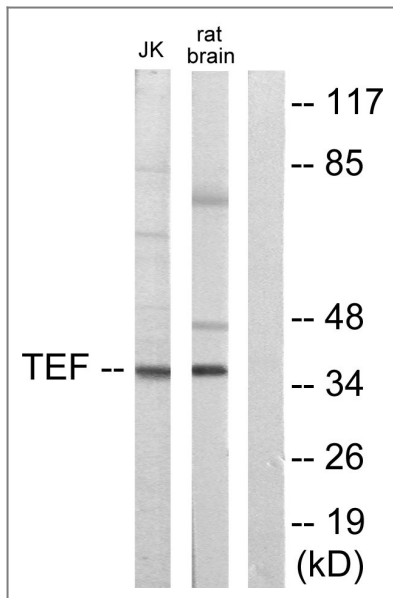
Target Information

Gene name	TEF		
Protein Name	Thyrotroph embryonic factor		
	Organism	Gene ID	UniProt ID
	Human	7008 ;	Q10587 ;
	Mouse	21685 ;	Q9JLC6 ;
	Rat	29362 ;	P41224 ;
Cellular Localization	Nucleus.		
Tissue specificity	Brain,Kidney,Retina,		
Function	Function:Transcription factor that binds to and transactivates the TSHB promoter. Binds to a minimal DNA-binding sequence 5'-[TC][AG][AG]TTA[TC][AG]-3'.induction:Accumulates according to a robust circadian rhythm.,similarity:Belongs to the bZIP family.,similarity:Belongs to the bZIP family. PAR subfamily.,similarity:Contains 1 bZIP domain.,subunit:Binds DNA as a homodimer or a heterodimer. Can form a heterodimer with DBP.,		

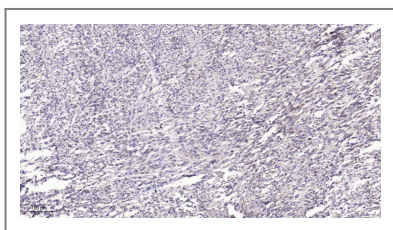
Validation Data



Western Blot analysis of various cells using TEF Polyclonal Antibody cells nucleus extracted by Minute TM Cytoplasmic and Nuclear Fractionation kit (SC-003,Inventbiotech,MN,USA).



Western blot analysis of lysates from Jurkat and rat brain cells, using TEF Antibody. The lane on the right is blocked with the synthesized peptide.



Immunohistochemical analysis of paraffin-embedded human Small intestinal stromal tumor. 1, Tris-EDTA, pH 9.0 was used for antigen retrieval. 2 Antibody was diluted at 1:200 (4° overnight). 3, Secondary antibody was diluted at 1:200 (room temperature, 45 min).

Contact information

Orders: order.cn@immunoway.com
 Support: support.cn@immunoway.com
 Telephone: 400-8787-807 (China)
 Website: <http://www.immunoway.com.cn>
 Address: 2200 Ringwood Ave San Jose, CA 95131 USA



Please scan the QR code to access additional product information:
TEF Rabbit pAb

For Research Use Only. Not for Use in Diagnostic Procedures.

[Antibody](#) | [ELISA Kits](#) | [Protein](#) | [Reagents](#)