

Tctex5 Rabbit pAb

CatalogNo: YT4589

Key Features

Host Species

- Rabbit

Reactivity

- Human, Mouse, Rat

Applications

- IHC, IF, ELISA

MW

- 14kD (Calculated)

Isotype

- IgG

Recommended Dilution Ratios

IHC 1:100-1:300

ELISA 1:40000

IF 1:50-200

Storage

Storage*

-15°C to -25°C/1 year (Do not lower than -25°C)

Formulation

Liquid in PBS containing 50% glycerol, 0.5% BSA and 0.02% sodium azide.

Basic Information

Clonality

Polyclonal

Immunogen Information

Immunogen

The antiserum was produced against synthesized peptide derived from human PPP1R11. AA range: 71-120

Specificity

Tctex5 Polyclonal Antibody detects endogenous levels of Tctex5 protein.

Target Information

Gene name PPP1R11

Protein Name Protein phosphatase 1 regulatory subunit 11

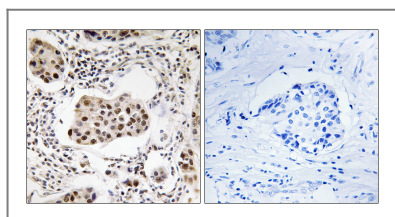
Organism	Gene ID	UniProt ID
Human	6992 ;	O60927 ;
Mouse	76497 ;	Q8K1L5 ;
Rat	294207 ;	Q6MFY6 ;

Cellular Localization protein phosphatase type 1 complex,nucleus,cytoplasm,

Tissue specificity Widely expressed.

Function Function:Inhibitor of protein phosphatase 1.,tissue specificity:Widely expressed.,

Validation Data



Immunohistochemistry analysis of paraffin-embedded human breast carcinoma tissue, using PPP1R11 Antibody. The picture on the right is blocked with the synthesized peptide.

Contact information

Orders: order.cn@immunoway.com
Support: support.cn@immunoway.com
Telephone: 400-8787-807(China)
Website: <http://www.immunoway.com.cn>
Address: 2200 Ringwood Ave San Jose, CA 95131 USA



Please scan the QR code to access additional product information:
Tctex5 Rabbit pAb

For Research Use Only. Not for Use in Diagnostic Procedures.

[Antibody](#) | [ELISA Kits](#) | [Protein](#) | [Reagents](#)