

## TBX2/3 Rabbit pAb

CatalogNo: YT4569

### Key Features

#### Host Species

- Rabbit

#### Reactivity

- Human, Mouse, Rat

#### Applications

- WB, ELISA

#### MW

- 79kD (Observed)

#### Isotype

- IgG

### Storage

**Storage\*** -15°C to -25°C/1 year (Do not lower than -25°C)

**Formulation** Liquid in PBS containing 50% glycerol, 0.5% BSA and 0.02% sodium azide.

### Recommended Dilution Ratios

**WB 1:500-1:2000**

**ELISA 1:20000**

**Not yet tested in other applications.**

### Basic Information

**Clonality** Polyclonal

### Immunogen Information

**Immunogen** The antiserum was produced against synthesized peptide derived from human TBX3. AA range: 271-320

**Specificity** TBX2/3 Polyclonal Antibody detects endogenous levels of TBX2/3 protein.

### Target Information

**Gene name** TBX2/TBX3

**Protein Name** T-box transcription factor TBX2/3

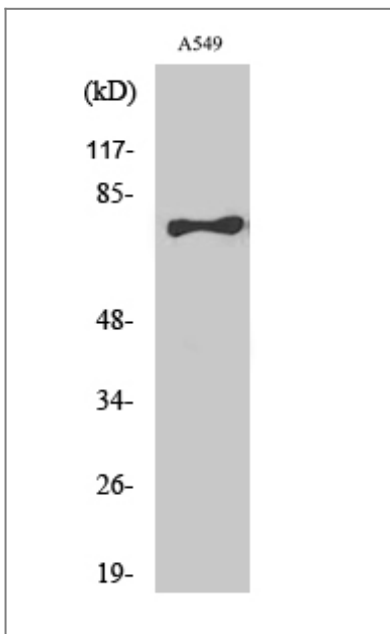
Organism	Gene ID	UniProt ID
Human	<a href="#">6926</a> ;	<a href="#">O15119</a> ; <a href="#">Q13207</a> ;
Mouse	<a href="#">21386</a> ; <a href="#">21385</a> ;	
Rat	<a href="#">353305</a> ;	<a href="#">Q7TST9</a> ;

**Cellular Localization** Nucleus .

**Tissue specificity** Widely expressed.

**Function** Disease:Defects in TBX3 are the cause of ulnar-mammary syndrome (UMS) [MIM:181450]. UMS is characterized by ulnar ray defects, obesity, hypogenitalism, delayed puberty, hypoplasia of nipples and apocrine glands.,Function:Transcriptional repressor involved in developmental processes. Probably plays a role in limb pattern formation.,similarity:Contains 1 T-box DNA-binding domain.,tissue specificity:Widely expressed.,

## Validation Data



Western Blot analysis of various cells using TBX2/3 Polyclonal Antibody

## Contact information

Orders: order.cn@immunoway.com  
Support: support.cn@immunoway.com  
Telephone: 400-8787-807(China)  
Website: <http://www.immunoway.com.cn>  
Address: 2200 Ringwood Ave San Jose, CA 95131 USA



Please scan the QR code  
to access additional  
product information:  
**TBX2/3 Rabbit pAb**

---

For Research Use Only. Not for Use in Diagnostic Procedures.

[Antibody](#) | [ELISA Kits](#) | [Protein](#) | [Reagents](#)