

## TAF II p18 Rabbit pAb

CatalogNo: YT4528

### Key Features

#### Host Species

- Rabbit

#### Reactivity

- Human, Mouse

#### Applications

- IHC, IF, ELISA

#### MW

- 14kD (Calculated)

#### Isotype

- IgG

### Recommended Dilution Ratios

IHC 1:100-1:300

ELISA 1:40000

IF 1:50-200

### Storage

**Storage\*** -15°C to -25°C/1 year (Do not lower than -25°C)

**Formulation** Liquid in PBS containing 50% glycerol, 0.5% BSA and 0.02% sodium azide.

### Basic Information

**Clonality** Polyclonal

### Immunogen Information

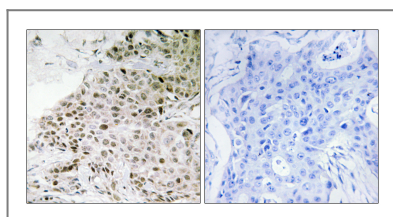
**Immunogen** The antiserum was produced against synthesized peptide derived from human TAF13. AA range: 71-120

**Specificity** TAF II p18 Polyclonal Antibody detects endogenous levels of TAF II p18 protein.

### Target Information

<b>Gene name</b>	TAF13		
<b>Protein Name</b>	Transcription initiation factor TFIID subunit 13		
	<b>Organism</b>	<b>Gene ID</b>	<b>UniProt ID</b>
	Human	<a href="#">6884;</a>	<a href="#">Q15543;</a>
	Mouse	<a href="#">99730;</a>	<a href="#">P61216;</a>
<b>Cellular Localization</b>	Nucleus .		
<b>Tissue specificity</b>	PCR rescued clones,		
<b>Function</b>	Domain:The binding of TAF10 and TAF11 requires distinct domains of TAF13.,Function:TFIID beta-specific TAFII.,similarity:Belongs to the TAF13 family.,similarity:Contains 1 histone-fold domain.,subunit:TFIID is composed of TATA binding protein (TBP) and a number of TBP-associated factors (TAFs). Interacts with TBP, and more strongly with TAF10 and TAF11.,		

## Validation Data



Immunohistochemistry analysis of paraffin-embedded human breast carcinoma tissue, using TAF13 Antibody. The picture on the right is blocked with the synthesized peptide.

## Contact information

Orders: [order.cn@immunoway.com](mailto:order.cn@immunoway.com)  
 Support: [support.cn@immunoway.com](mailto:support.cn@immunoway.com)  
 Telephone: 400-8787-807(China)  
 Website: <http://www.immunoway.com.cn>  
 Address: 2200 Ringwood Ave San Jose, CA 95131 USA



Please scan the QR code  
 to access additional  
 product information:  
**TAF II p18 Rabbit  
 pAb**

For Research Use Only. Not for Use in Diagnostic Procedures.

[Antibody](#) | [ELISA Kits](#) | [Protein](#) | [Reagents](#)