

TAAR3 Rabbit pAb

CatalogNo: YT4518

Key Features

Host Species

- Rabbit

Reactivity

- Human

Applications

- WB,IF,ELISA

MW

- 39kD (Observed)

Isotype

- IgG

Storage

Storage* -15°C to -25°C/1 year(Do not lower than -25°C)

Formulation Liquid in PBS containing 50% glycerol, 0.5% BSA and 0.02% sodium azide.

Recommended Dilution Ratios

WB 1:500-1:2000

IF 1:200-1:1000

ELISA 1:10000

Not yet tested in other applications.

Basic Information

Clonality Polyclonal

Immunogen Information

Immunogen The antiserum was produced against synthesized peptide derived from human TAAR3. AA range:206-255

Specificity TAAR3 Polyclonal Antibody detects endogenous levels of TAAR3 protein.

Target Information

Gene name TAAR3

Protein Name Putative trace amine-associated receptor 3

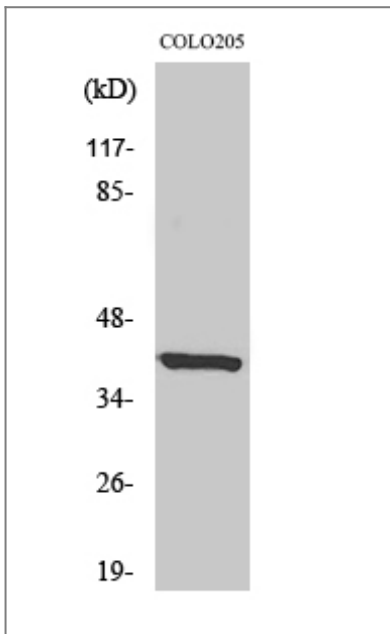
Organism	Gene ID	UniProt ID
Human	9288 ;	Q9P1P4 ;
Mouse		Q5QD16 ;

Cellular Localization Cell membrane ; Multi-pass membrane protein .

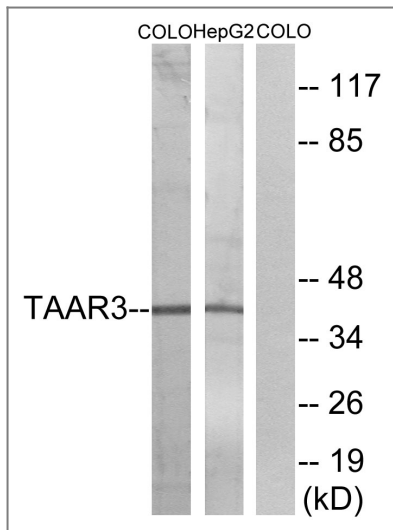
Tissue specificity Not expressed in the pons, thalamus, globus pallidus, caudate, putamen or cerebellum.

Function Caution:Seems to be a non functional due to its divergence in positions 20 to 45 (due to a frameshift) but does not seem to be the product of a pseudogene.,Function:Orphan receptor.,similarity:Belongs to the G-protein coupled receptor 1 family.,tissue specificity:Not expressed in the pons, thalamus, globus pallidus, caudate, putamen or cerebellum.,

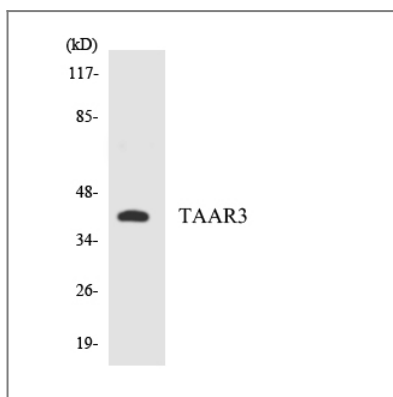
Validation Data



Western Blot analysis of various cells using TAAR3 Polyclonal Antibody



Western blot analysis of lysates from COLO and HepG2 cells, using TAAR3 Antibody. The lane on the right is blocked with the synthesized peptide.



Western blot analysis of the lysates from HepG2 cells using TAAR3 antibody.

Contact information

Orders: order.cn@immunoway.com
 Support: support.cn@immunoway.com
 Telephone: 400-8787-807(China)
 Website: <http://www.immunoway.com.cn>
 Address: 2200 Ringwood Ave San Jose, CA 95131 USA



Please scan the QR code to access additional product information:
TAAR3 Rabbit pAb

For Research Use Only. Not for Use in Diagnostic Procedures.

[Antibody](#) | [ELISA Kits](#) | [Protein](#) | [Reagents](#)