

## T2R8 Rabbit pAb

CatalogNo: YT4516

### | Key Features

#### Host Species

- Rabbit

#### Reactivity

- Human

#### Applications

- WB,IF,ELISA

#### MW

- 36kD (Observed)

#### Isotype

- IgG

### | Recommended Dilution Ratios

**WB 1:500-1:2000**

**IF 1:200-1:1000**

**ELISA 1:10000**

**Not yet tested in other applications.**

### | Storage

#### Storage\*

-15°C to -25°C/1 year(Do not lower than -25°C)

#### Formulation

Liquid in PBS containing 50% glycerol, 0.5% BSA and 0.02% sodium azide.

### | Basic Information

#### Clonality

Polyclonal

### | Immunogen Information

#### Immunogen

The antiserum was produced against synthesized peptide derived from human TAS2R8. AA range:45-94

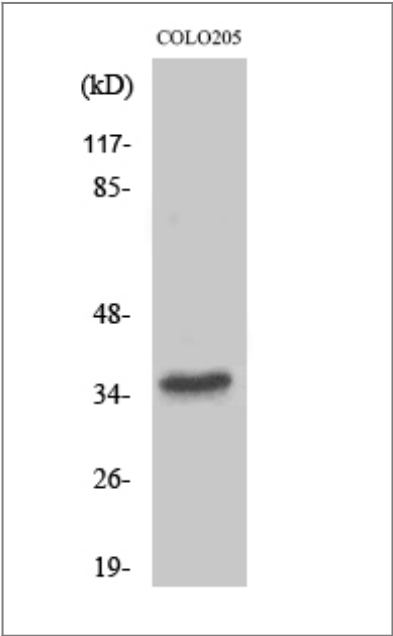
#### Specificity

T2R8 Polyclonal Antibody detects endogenous levels of T2R8 protein.

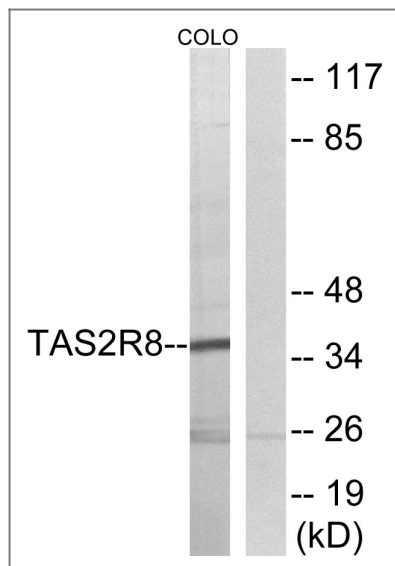
### | Target Information

Gene name	TAS2R8		
Protein Name	Taste receptor type 2 member 8		
	Organism	Gene ID	UniProt ID
	Human	<a href="#">50836</a> ;	<a href="#">Q9NYW2</a> ;
Cellular Localization	Membrane; Multi-pass membrane protein.		
Tissue specificity	Expressed in subsets of taste receptor cells of the tongue and palate epithelium and exclusively in gustducin-positive cells.		
Function	Function:Receptor that may play a role in the perception of bitterness and is gustducin-linked. May play a role in sensing the chemical composition of the gastrointestinal content. The activity of this receptor may stimulate alpha gustducin, mediate PLC-beta-2 activation and lead to the gating of TRPM5.,miscellaneous:Most taste cells may be activated by a limited number of bitter compounds; individual taste cells can discriminate among bitter stimuli.,similarity:Belongs to the G-protein coupled receptor T2R family.,tissue specificity:Expressed in subsets of taste receptor cells of the tongue and palate epithelium and exclusively in gustducin-positive cells.,		

## Validation Data



Western Blot analysis of various cells using T2R8 Polyclonal Antibody



Western blot analysis of lysates from COLO cells, using TAS2R8 Antibody. The lane on the right is blocked with the synthesized peptide.

## Contact information

Orders: [order.cn@immunoway.com](mailto:order.cn@immunoway.com)  
 Support: [support.cn@immunoway.com](mailto:support.cn@immunoway.com)  
 Telephone: 400-8787-807(China)  
 Website: <http://www.immunoway.com.cn>  
 Address: 2200 Ringwood Ave San Jose, CA 95131 USA



Please scan the QR code to access additional product information:  
**T2R8 Rabbit pAb**

For Research Use Only. Not for Use in Diagnostic Procedures.

[Antibody](#) | [ELISA Kits](#) | [Protein](#) | [Reagents](#)