

## T2R48 Rabbit pAb

CatalogNo: YT4512

### | Key Features

#### Host Species

- Rabbit

#### Reactivity

- Human

#### Applications

- WB,ELISA

#### MW

- 34kD (Calculated)

#### Isotype

- IgG

### | Recommended Dilution Ratios

**WB 1:500-1:2000**

**ELISA 1:20000**

**Not yet tested in other applications.**

### | Storage

**Storage\*** -15°C to -25°C/1 year(Do not lower than -25°C)

**Formulation** Liquid in PBS containing 50% glycerol, 0.5% BSA and 0.02% sodium azide.

### | Basic Information

**Clonality** Polyclonal

### | Immunogen Information

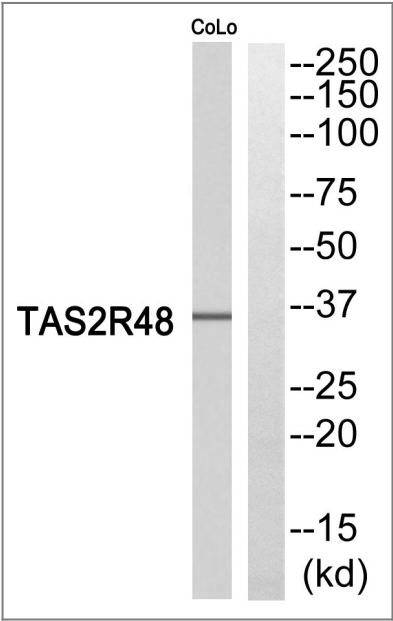
**Immunogen** The antiserum was produced against synthesized peptide derived from human TAS2R48. AA range:90-139

**Specificity** T2R48 Polyclonal Antibody detects endogenous levels of T2R48 protein.

### | Target Information

Gene name	TAS2R19		
Protein Name	Taste receptor type 2 member 19		
	Organism	Gene ID	UniProt ID
	Human	<a href="#">259294</a> ;	<a href="#">P59542</a> ;
Cellular Localization	Membrane; Multi-pass membrane protein.		
Tissue specificity	Expressed in subsets of taste receptor cells of the tongue and exclusively in gustducin-positive cells.		
Function	Function:Receptor that may play a role in the perception of bitterness and is gustducin-linked. May play a role in sensing the chemical composition of the gastrointestinal content. The activity of this receptor may stimulate alpha gustducin, mediate PLC-beta-2 activation and lead to the gating of TRPM5.,miscellaneous:Most taste cells may be activated by a limited number of bitter compounds; individual taste cells can discriminate among bitter stimuli.,similarity:Belongs to the G-protein coupled receptor T2R family.,tissue specificity:Expressed in subsets of taste receptor cells of the tongue and exclusively in gustducin-positive cells.,		

| Validation Data



Western blot analysis of TAS2R48 Antibody. The lane on the right is blocked with the TAS2R48 peptide.

| Contact information

Orders: order.cn@immunoway.com  
Support: support.cn@immunoway.com  
Telephone: 400-8787-807(China)  
Website: <http://www.immunoway.com.cn>  
Address: 2200 Ringwood Ave San Jose, CA 95131 USA



Please scan the QR code  
to access additional  
product information:  
**T2R48 Rabbit pAb**

---

For Research Use Only. Not for Use in Diagnostic Procedures.

[Antibody](#) | [ELISA Kits](#) | [Protein](#) | [Reagents](#)