

SURF-1 Rabbit pAb

CatalogNo: YT4471

| Key Features

Host Species

- Rabbit

Reactivity

- Human, Mouse, Rat

Applications

- WB, IHC, IF, ELISA

MW

- 30kD (Observed)

Isotype

- IgG

| Recommended Dilution Ratios

WB 1:500-1:2000

IHC 1:100-1:300

IF 1:200-1:1000

ELISA 1:20000

Not yet tested in other applications.

| Storage

Storage* -15°C to -25°C/1 year (Do not lower than -25°C)

Formulation Liquid in PBS containing 50% glycerol, 0.5% BSA and 0.02% sodium azide.

| Basic Information

Clonality Polyclonal

| Immunogen Information

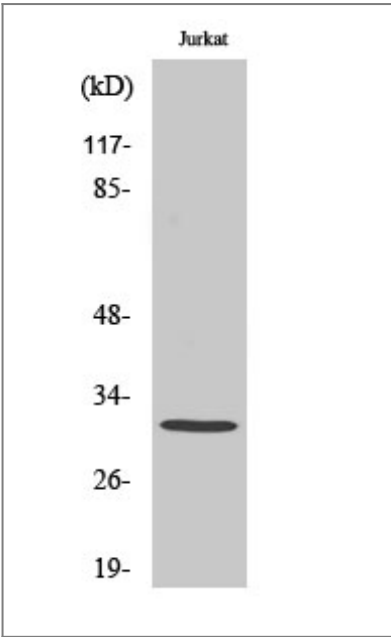
Immunogen The antiserum was produced against synthesized peptide derived from human SURF1. AA range: 171-220

Specificity SURF-1 Polyclonal Antibody detects endogenous levels of SURF-1 protein.

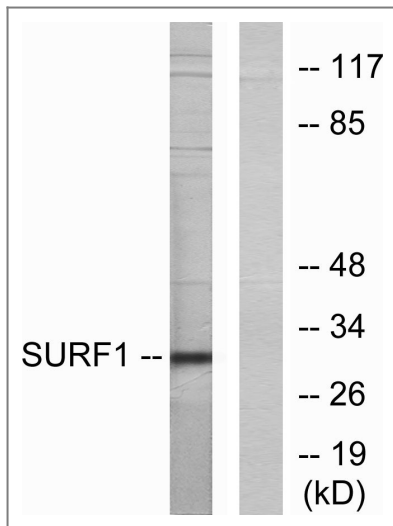
Target Information

| | | | |
|-----------------------|--|-------------------------|--------------------------|
| Gene name | SURF1 | | |
| Protein Name | Surfeit locus protein 1 | | |
| | Organism | Gene ID | UniProt ID |
| | Human | 6834 ; | Q15526 ; |
| | Mouse | 20930 ; | P09925 ; |
| | Rat | 64463 ; | Q9QXU2 ; |
| Cellular Localization | Mitochondrion inner membrane ; Multi-pass membrane protein . | | |
| Tissue specificity | Colon,Kidney,Skin,Stomach, | | |
| Function | Disease:Defects in SURF1 are a cause of Leigh syndrome (LS) [MIM:256000]. LS is a severe neurological disorder characterized by bilaterally symmetrical necrotic lesions in subcortical brain regions that is commonly associated with systemic cytochrome c oxidase (COX) deficiency.,Function:Probably involved in the biogenesis of the COX complex.,similarity:Belongs to the SURF1 family., | | |

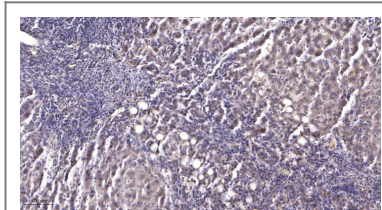
Validation Data



Western Blot analysis of Jurkat cells using SURF-1 Polyclonal Antibody



Western blot analysis of lysates from Jurkat cells, using SURF1 Antibody. The lane on the right is blocked with the synthesized peptide.



Immunohistochemical analysis of paraffin-embedded human liver cancer. 1, Antibody was diluted at 1:200(4° overnight). 2, Tris-EDTA,pH9.0 was used for antigen retrieval. 3,Secondary antibody was diluted at 1:200(room temperature, 45min).

| Contact information

Orders: order.cn@immunoway.com
Support: support.cn@immunoway.com
Telephone: 400-8787-807(China)
Website: <http://www.immunoway.com.cn>
Address: 2200 Ringwood Ave San Jose, CA 95131 USA



Please scan the QR code to access additional product information:
SURF-1 Rabbit pAb

For Research Use Only. Not for Use in Diagnostic Procedures.

[Antibody](#) | [ELISA Kits](#) | [Protein](#) | [Reagents](#)