

SUHW1 Rabbit pAb

CatalogNo: YT4467

Key Features

Host Species

- Rabbit

Reactivity

- Human

Applications

- WB,IHC

MW

- 50kD (Observed)

Isotype

- IgG

Recommended Dilution Ratios

WB 1:500-2000

IHC 1:50-300

Storage

Storage*

-15°C to -25°C/1 year(Do not lower than -25°C)

Formulation

Liquid in PBS containing 50% glycerol, 0.5% BSA and 0.02% sodium azide.

Basic Information

Clonality

Polyclonal

Immunogen Information

Immunogen

The antiserum was produced against synthesized peptide derived from human ZNF280A. AA range:441-490

Specificity

SUHW1 Polyclonal Antibody detects endogenous levels of SUHW1 protein.

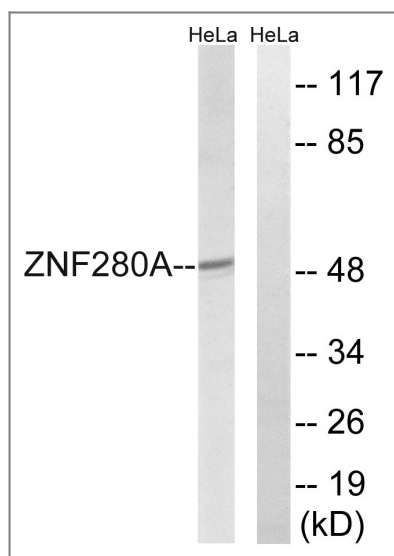
Target Information

Gene name

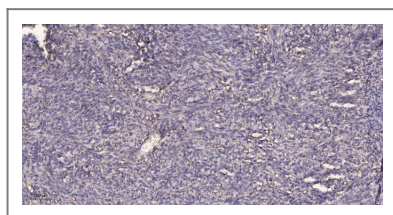
ZNF280A

Protein Name	Zinc finger protein 280A		
	Organism	Gene ID	UniProt ID
	Human	129025;	P59817;
Cellular Localization	Nucleus .		
Tissue specificity	Melanoma,Testis,		
Function	Function:May function as a transcription factor.,similarity:Contains 4 C2H2-type zinc fingers.,		

Validation Data



Western blot analysis of lysates from HeLa cells, using ZNF280A Antibody. The lane on the right is blocked with the synthesized peptide.



Immunohistochemical analysis of paraffin-embedded human Colon cancer. 1, Antibody was diluted at 1:200(4° overnight). 2, Tris-EDTA,pH9.0 was used for antigen retrieval. 3,Secondary antibody was diluted at 1:200(room temperature, 45min).

Contact information

Orders: order.cn@immunoway.com
 Support: support.cn@immunoway.com
 Telephone: 400-8787-807(China)
 Website: <http://www.immunoway.com.cn>
 Address: 2200 Ringwood Ave San Jose, CA 95131 USA



Please scan the QR code to access additional product information:
SUHW1 Rabbit pAb

