

Strad Rabbit pAb

CatalogNo: YT4464

Key Features

Host Species

- Rabbit

Reactivity

- Human, Mouse

Applications

- WB, IHC, IF, ELISA

MW

- 46kD (Observed)

Isotype

- IgG

Recommended Dilution Ratios

WB 1:500-1:2000

IHC 1:100-1:300

ELISA 1:10000

IF 1:50-200

Storage

Storage* -15°C to -25°C/1 year (Do not lower than -25°C)

Formulation Liquid in PBS containing 50% glycerol, 0.5% BSA and 0.02% sodium azide.

Basic Information

Clonality Polyclonal

Immunogen Information

Immunogen The antiserum was produced against synthesized peptide derived from human STRAD. AA range:11-60

Specificity Strad Polyclonal Antibody detects endogenous levels of Strad protein.

Target Information

Gene name STRADA

Protein Name STE20-related kinase adapter protein alpha

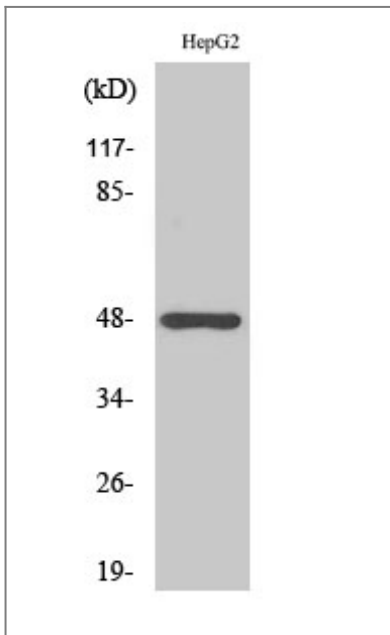
Organism	Gene ID	UniProt ID
Human	92335;	Q7RTN6;
Mouse	72149;	Q3UUJ4;

Cellular Localization Nucleus . Cytoplasm .

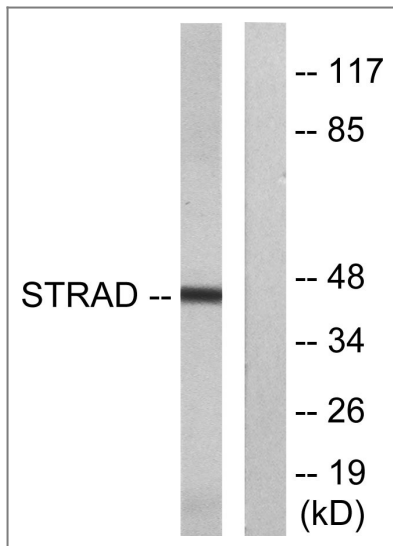
Tissue specificity Lymph node,Mammary tumor,Synovial membrane tissue,Teratocarcinoma,U

Function Disease:Deletions involving STRADA are the cause of polyhydramnios, megalencephaly, and symptomatic epilepsy syndrome (PMSE) [MIM:611087]. Affected children have large heads, infantile-onset intractable multifocal seizures and severe psychomotor retardation. Neuropathological studies reveal megalencephaly, ventriculomegaly, cytomegaly and extensive vacuolization and astrogliosis of white matter.,Domain:The protein kinase domain is predicted to be catalytically inactive.,Function:Pseudokinase which, in complex with CAB39, binds to and activates STK11. Relocates STK11 from the nucleus to the cytoplasm. Plays an essential role in STK11-mediated G1 cell cycle arrest.,similarity:Belongs to the protein kinase superfamily. STE Ser/Thr protein kinase family. STE20 subfamily.,similarity:Contains 1 protein kinase domain.,

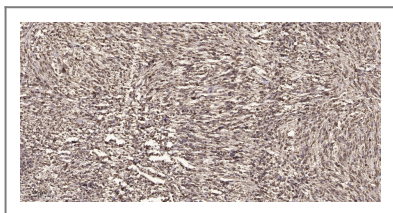
Validation Data



Western Blot analysis of various cells using Strad Polyclonal Antibody



Western blot analysis of lysates from HepG2 cells, using STRAD Antibody. The lane on the right is blocked with the synthesized peptide.



Immunohistochemical analysis of paraffin-embedded human small intestinal carcinoma tissue. 1,primary Antibody was diluted at 1:200(4° overnight). 2, Sodium citrate pH 6.0 was used for antigen retrieval(>98°C,20min). 3,Secondary antibody was diluted at 1:200

Contact information

Orders: order.cn@immunoway.com
Support: support.cn@immunoway.com
Telephone: 400-8787-807(China)
Website: <http://www.immunoway.com.cn>
Address: 2200 Ringwood Ave San Jose, CA 95131 USA



Please scan the QR code to access additional product information:
Strad Rabbit pAb

For Research Use Only. Not for Use in Diagnostic Procedures.

[Antibody](#) | [ELISA Kits](#) | [Protein](#) | [Reagents](#)