

Stathmin-3 Rabbit pAb

CatalogNo: YT4456

Key Features

Host Species

- Rabbit

Reactivity

- Human, Mouse, Rat

Applications

- WB, ELISA, IHC

MW

- 22kD (Observed)

Isotype

- IgG

Recommended Dilution Ratios

WB 1:500-2000

IHC 1:50-300

ELISA 1:2000-20000

Storage

Storage* -15°C to -25°C/1 year (Do not lower than -25°C)

Formulation Liquid in PBS containing 50% glycerol, 0.5% BSA and 0.02% sodium azide.

Basic Information

Clonality Polyclonal

Immunogen Information

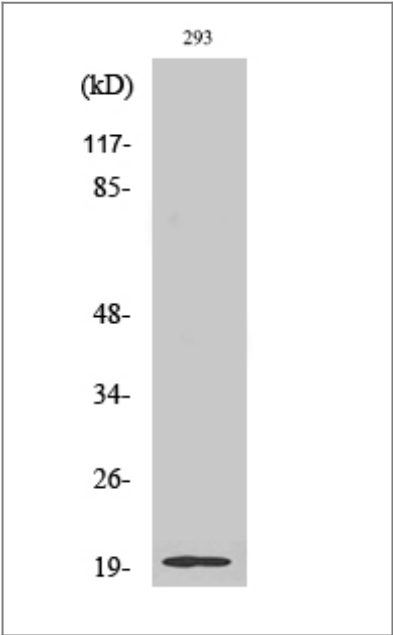
Immunogen The antiserum was produced against synthesized peptide derived from human STMN3. AA range: 61-110

Specificity Stathmin-3 Polyclonal Antibody detects endogenous levels of Stathmin-3 protein.

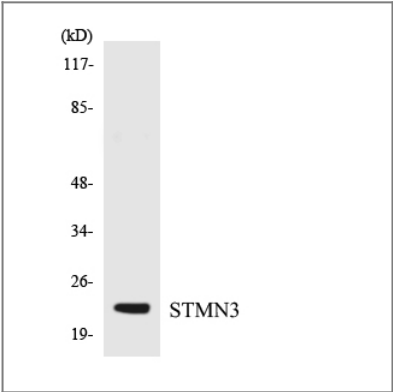
Target Information

Gene name	STMN3		
Protein Name	Stathmin-3		
	Organism	Gene ID	UniProt ID
	Human	50861 ;	Q9NZ72 ;
	Mouse	20262 ;	O70166 ;
	Rat	29246 ;	Q9JHU6 ;
Cellular Localization	Golgi apparatus . Cell projection, growth cone . Cell projection, axon . Cytoplasm, cytosol .		
Tissue specificity	Neuron specific.		
Function	similarity:Belongs to the stathmin family.,tissue specificity:Neuron specific.,		

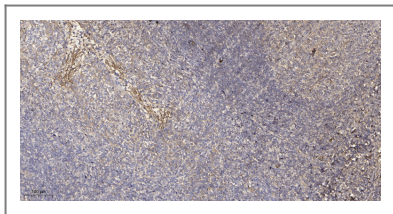
Validation Data



Western Blot analysis of various cells using Stathmin-3 Polyclonal Antibody



Western blot analysis of the lysates from K562 cells using STMN3 antibody.



Immunohistochemical analysis of paraffin-embedded human tonsil. 1, Antibody was diluted at 1:200(4° overnight). 2, Tris-EDTA,pH9.0 was used for antigen retrieval. 3,Secondary antibody was diluted at 1:200(room temperature, 45min).

| Contact information

Orders: order.cn@immunoway.com
Support: support.cn@immunoway.com
Telephone: 400-8787-807(China)
Website: <http://www.immunoway.com.cn>
Address: 2200 Ringwood Ave San Jose, CA 95131 USA



Please scan the QR code
to access additional
product information:
**Stathmin-3 Rabbit
pAb**

For Research Use Only. Not for Use in Diagnostic Procedures.

[Antibody](#) | [ELISA Kits](#) | [Protein](#) | [Reagents](#)