

STAC2 Rabbit pAb

CatalogNo: YT4433

| Key Features

Host Species

- Rabbit

Reactivity

- Human, Mouse, Rat

Applications

- WB, ELISA

MW

- 40kD (Observed)

Isotype

- IgG

| Recommended Dilution Ratios

WB 1:500-1:2000

ELISA 1:20000

Not yet tested in other applications.

| Storage

Storage*

-15°C to -25°C/1 year (Do not lower than -25°C)

Formulation

Liquid in PBS containing 50% glycerol, 0.5% BSA and 0.02% sodium azide.

| Basic Information

Clonality

Polyclonal

| Immunogen Information

Immunogen

The antiserum was produced against synthesized peptide derived from human STAC2. AA range: 211-260

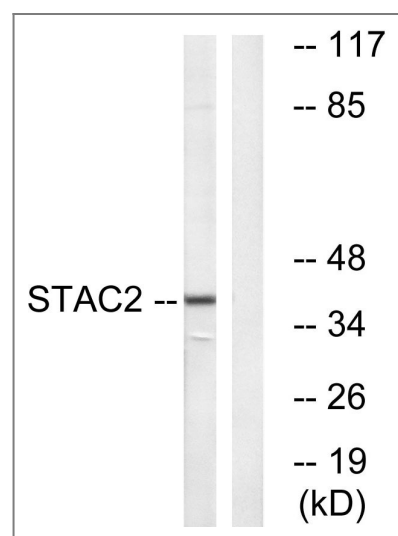
Specificity

STAC2 Polyclonal Antibody detects endogenous levels of STAC2 protein.

| Target Information

Gene name	STAC2		
Protein Name	SH3 and cysteine-rich domain-containing protein 2		
	Organism	Gene ID	UniProt ID
	Human	342667 ;	Q6ZMT1 ;
	Mouse	217154 ;	Q8R1B0 ;
Cellular Localization	Cytoplasm, cytosol . Cell membrane ; Peripheral membrane protein ; Cytoplasmic side . Cell membrane, sarcolemma ; Peripheral membrane protein ; Cytoplasmic side . Colocalizes with CACNA1C at the plasma membrane of transfected cells. .		
Tissue specificity	Brain,Uterus,		
Function	similarity:Contains 1 phorbol-ester/DAG-type zinc finger.,similarity:Contains 1 SH3 domain.,		

Validation Data



Western blot analysis of lysates from K562 cells, using STAC2 Antibody. The lane on the right is blocked with the synthesized peptide.

Contact information

Orders: order.cn@immunoway.com
 Support: support.cn@immunoway.com
 Telephone: 400-8787-807(China)
 Website: <http://www.immunoway.com.cn>
 Address: 2200 Ringwood Ave San Jose, CA 95131 USA



Please scan the QR code to access additional product information:
STAC2 Rabbit pAb