

SSBP1 Rabbit pAb

CatalogNo: YT4426

| Key Features

Host Species

- Rabbit

Reactivity

- Human, Mouse, Rat, Cow

Applications

- WB, IHC, IF, ELISA

MW

- 17kD (Observed)

Isotype

- IgG

| Recommended Dilution Ratios

WB 1:500-1:2000

IHC 1:100-1:300

IF 1:200-1:1000

ELISA 1:20000

Not yet tested in other applications.

| Storage

Storage* -15°C to -25°C/1 year (Do not lower than -25°C)

Formulation Liquid in PBS containing 50% glycerol, 0.5% BSA and 0.02% sodium azide.

| Basic Information

Clonality Polyclonal

| Immunogen Information

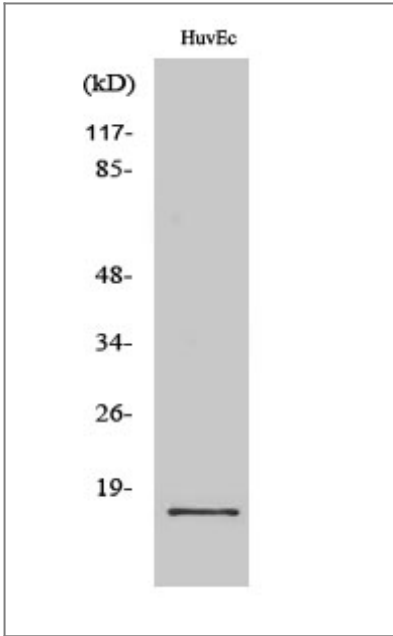
Immunogen The antiserum was produced against synthesized peptide derived from human MtSSB. AA range: 99-148

Specificity SSBP1 Polyclonal Antibody detects endogenous levels of SSBP1 protein.

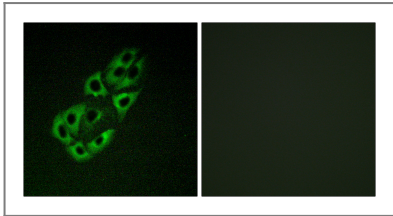
Target Information

Gene name	SSBP1		
Protein Name	Single-stranded DNA-binding protein mitochondrial		
	Organism	Gene ID	UniProt ID
	Human	6742 ;	Q04837 ;
	Mouse	381760 ;	Q9CYR0 ;
	Rat	54304 ;	P28042 ;
Cellular Localization	Mitochondrion . Mitochondrion matrix, mitochondrion nucleoid .		
Tissue specificity	Expressed in retinal ganglion cells, photoreceptors, pigmented epithelium and fibroblasts (at protein level).		
Function	Function:This protein binds preferentially and cooperatively to ss-DNA. Probably involved in mitochondrial DNA replication.,PTM:Phosphorylated upon DNA damage, probably by ATM or ATR.,similarity:Contains 1 SSB domain.,subunit:Homotetramer.,		

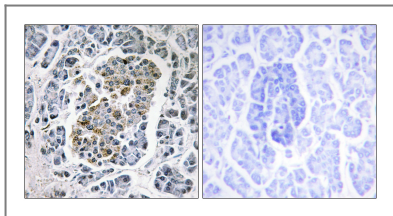
Validation Data



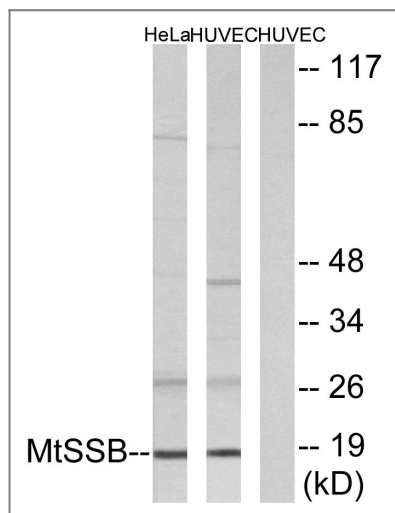
Western Blot analysis of various cells using SSBP1 Polyclonal Antibody



Immunofluorescence analysis of A549 cells, using MtSSB Antibody. The picture on the right is blocked with the synthesized peptide.



Immunohistochemistry analysis of paraffin-embedded human pancreas tissue, using MtSSB Antibody. The picture on the right is blocked with the synthesized peptide.



Western blot analysis of lysates from HUVEC and HeLa cells, using MtSSB Antibody. The lane on the right is blocked with the synthesized peptide.

Contact information

Orders: order.cn@immunoway.com
 Support: support.cn@immunoway.com
 Telephone: 400-8787-807(China)
 Website: <http://www.immunoway.com.cn>
 Address: 2200 Ringwood Ave San Jose, CA 95131 USA



Please scan the QR code to access additional product information:
SSBP1 Rabbit pAb

For Research Use Only. Not for Use in Diagnostic Procedures.

[Antibody](#) | [ELISA Kits](#) | [Protein](#) | [Reagents](#)