

SRPK3 Rabbit pAb

CatalogNo: YT4423

Key Features

Host Species

- Rabbit

Reactivity

- Human, Mouse, Rat

Applications

- WB, ELISA

MW

- 60kD (Observed)

Isotype

- IgG

Storage

Storage* -15°C to -25°C/1 year (Do not lower than -25°C)

Formulation Liquid in PBS containing 50% glycerol, 0.5% BSA and 0.02% sodium azide.

Recommended Dilution Ratios

WB 1:500-1:2000

ELISA 1:10000

Not yet tested in other applications.

Basic Information

Clonality Polyclonal

Immunogen Information

Immunogen The antiserum was produced against synthesized peptide derived from human SRPK3. AA range:261-310

Specificity SRPK3 Polyclonal Antibody detects endogenous levels of SRPK3 protein.

Target Information

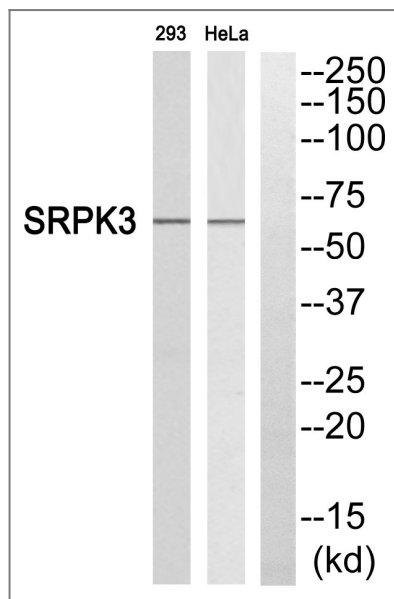
Gene name SRPK3
Protein Name SRSF protein kinase 3

Organism	Gene ID	UniProt ID
Human	26576;	Q9UPE1;
Mouse	56504;	Q9Z0G2;

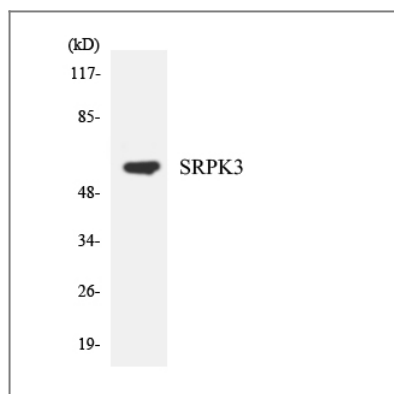
Tissue specificity Exclusively expressed in skeletal and heart muscle.

Function Catalytic activity:ATP + a protein = ADP + a phosphoprotein. ,Function:Required for normal muscle development. ,similarity:Belongs to the protein kinase superfamily. ,similarity:Belongs to the protein kinase superfamily. CMGC Ser/Thr protein kinase family. ,similarity:Contains 1 protein kinase domain. ,tissue specificity:Exclusively expressed in skeletal and heart muscle. ,

Validation Data



Western blot analysis of the lysates from HeLa cells using SRPK3 antibody.



| Contact information

Orders: order.cn@immunoway.com
Support: support.cn@immunoway.com
Telephone: 400-8787-807(China)
Website: <http://www.immunoway.com.cn>
Address: 2200 Ringwood Ave San Jose, CA 95131 USA



Please scan the QR code
to access additional
product information:
SRPK3 Rabbit pAb

For Research Use Only. Not for Use in Diagnostic Procedures.

[Antibody](#) | [ELISA Kits](#) | [Protein](#) | [Reagents](#)