

## SRp40 Rabbit pAb

CatalogNo: YT4418

### Key Features

#### Host Species

- Rabbit

#### Reactivity

- Human, Mouse, Rat

#### Applications

- IHC, IF, ELISA

#### MW

- 31kD (Calculated)

#### Isotype

- IgG

### Storage

**Storage\*** -15°C to -25°C/1 year (Do not lower than -25°C)

**Formulation** Liquid in PBS containing 50% glycerol, 0.5% BSA and 0.02% sodium azide.

### Recommended Dilution Ratios

**IHC 1:100-1:300**

**IF 1:200-1:1000**

**ELISA 1:20000**

**Not yet tested in other applications.**

### Basic Information

**Clonality** Polyclonal

### Immunogen Information

**Immunogen** The antiserum was produced against synthesized peptide derived from human SFRS5. AA range: 71-120

**Specificity** SRp40 Polyclonal Antibody detects endogenous levels of SRp40 protein.

### Target Information

**Gene name** SRSF5  
**Protein Name** Serine/arginine-rich splicing factor 5

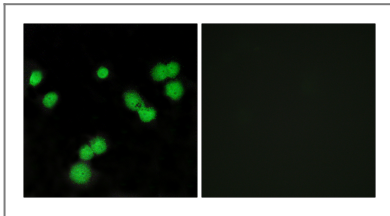
Organism	Gene ID	UniProt ID
Human	<a href="#">6430;</a>	<a href="#">Q13243;</a>
Mouse	<a href="#">20384;</a>	<a href="#">O35326;</a>
Rat	<a href="#">29667;</a>	<a href="#">Q09167;</a>

**Cellular Localization** Nucleus.

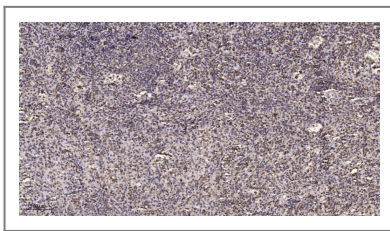
**Tissue specificity** Brain,Colon,Epithelium,Fetal brain,Human endometrium carcin

**Function** Function:Plays a role in constitutive splicing and can modulate the selection of alternative splice sites.,PTM:Extensively phosphorylated on serine residues in the RS domain.,similarity:Belongs to the splicing factor SR family.,similarity:Contains 2 RRM (RNA recognition motif) domains.,subunit:Found in a pre-mRNA splicing complex with SFRS4, SFRS5, SNRNP70, SNRPA1, SRRM1 and SRRM2.,

## Validation Data



Immunofluorescence analysis of MCF7 cells, using SFRS5 Antibody. The picture on the right is blocked with the synthesized peptide.



Immunohistochemical analysis of paraffin-embedded human spleen. 1, Tris-EDTA,pH9.0 was used for antigen retrieval. 2 Antibody was diluted at 1:200(4° overnight).3,Secondary antibody was diluted at 1:200(room temperature, 45min).

## Contact information

Orders: [order.cn@immunoway.com](mailto:order.cn@immunoway.com)  
Support: [support.cn@immunoway.com](mailto:support.cn@immunoway.com)  
Telephone: 400-8787-807(China)  
Website: <http://www.immunoway.com.cn>  
Address: 2200 Ringwood Ave San Jose, CA 95131 USA



Please scan the QR code to access additional product information:  
**SRp40 Rabbit pAb**

