

SREC-II Rabbit pAb

CatalogNo: YT4412

Key Features

Host Species

- Rabbit

Reactivity

- Human, Mouse

Applications

- IHC, IF, ELISA

Isotype

- IgG

Recommended Dilution Ratios

IHC 1:100-1:300

ELISA 1:40000

IF 1:50-200

Storage

Storage*

-15°C to -25°C/1 year (Do not lower than -25°C)

Formulation

Liquid in PBS containing 50% glycerol, 0.5% BSA and 0.02% sodium azide.

Basic Information

Clonality

Polyclonal

Immunogen Information

Immunogen

The antiserum was produced against synthesized peptide derived from human SCARF2. AA range: 677-726

Specificity

SREC-II Polyclonal Antibody detects endogenous levels of SREC-II protein.

Target Information

Gene name SCARF2

Protein Name Scavenger receptor class F member 2

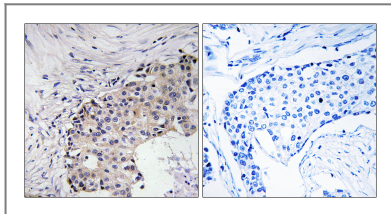
Organism	Gene ID	UniProt ID
Human	91179 ;	Q96GP6 ;
Mouse		P59222 ;

Cellular Localization Membrane ; Single-pass type I membrane protein .

Tissue specificity Predominantly expressed in endothelial cells. Expressed in heart, placenta, lung, kidney, spleen, small intestine and ovary.

Function Function:Probable adhesion protein, which mediates homophilic and heterophilic interactions. In contrast to SCARF1, it poorly mediates the binding and degradation of acetylated low density lipoprotein (Ac-LDL).,similarity:Contains 7 EGF-like domains.,subunit:Homophilic and heterophilic interaction via its extracellular domain. Interacts with SCARF1. The heterophilic interaction with SCARF1, which is stronger than the homophilic interaction with itself, is suppressed by the presence of SCARF1 ligand such as Ac-LDL.,tissue specificity:Predominantly expressed in endothelial cells. Expressed in heart, placenta, lung, kidney, spleen, small intestine and ovary.,

Validation Data



Immunohistochemistry analysis of paraffin-embedded human breast carcinoma, using SCARF2 Antibody. The picture on the right is blocked with the synthesized peptide.

Contact information

Orders: order.cn@immunoway.com
Support: support.cn@immunoway.com
Telephone: 400-8787-807(China)
Website: <http://www.immunoway.com.cn>
Address: 2200 Ringwood Ave San Jose, CA 95131 USA



Please scan the QR code to access additional product information:
SREC-II Rabbit pAb