

SR-2B Rabbit pAb

CatalogNo: YT4398

Key Features

Host Species

- Rabbit

Reactivity

- Human

Applications

- WB,IF,ELISA

MW

- 54kD (Observed)

Isotype

- IgG

Recommended Dilution Ratios

WB 1:500-1:2000

IF 1:200-1:1000

ELISA 1:10000

Not yet tested in other applications.

Storage

Storage*

-15°C to -25°C/1 year(Do not lower than -25°C)

Formulation

Liquid in PBS containing 50% glycerol, 0.5% BSA and 0.02% sodium azide.

Basic Information

Clonality

Polyclonal

Immunogen Information

Immunogen

The antiserum was produced against synthesized peptide derived from human HTR2B. AA range:15-64

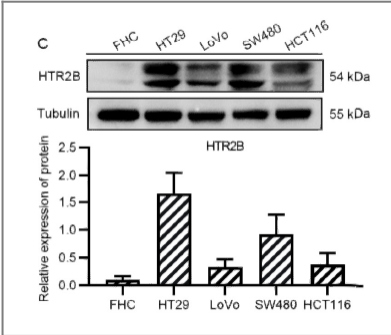
Specificity

SR-2B Polyclonal Antibody detects endogenous levels of SR-2B protein.

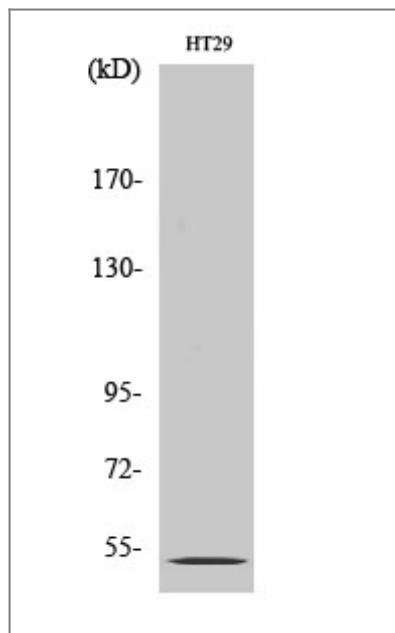
Target Information

Gene name	HTR2B		
Protein Name	5-hydroxytryptamine receptor 2B		
	Organism	Gene ID	UniProt ID
	Human	3357;	P41595;
	Mouse		Q02152;
Cellular Localization	Cell membrane ; Multi-pass membrane protein . Cell junction, synapse, synaptosome .		
Tissue specificity	Ubiquitous. Detected in liver, kidney, heart, pulmonary artery, and intestine. Detected at lower levels in blood, placenta and brain, especially in cerebellum, occipital cortex and frontal cortex.		
Function	Function:This is one of the several different receptors for 5-hydroxytryptamine (serotonin), a biogenic hormone that functions as a neurotransmitter, a hormone, and a mitogen. This receptor mediates its action by association with G proteins that activate a phosphatidylinositol-calcium second messenger system.,similarity:Belongs to the G-protein coupled receptor 1 family.,subunit:Interacts with MPDZ.,tissue specificity:Detected in most peripheral organs. Only low expression levels were found in the brain.,		

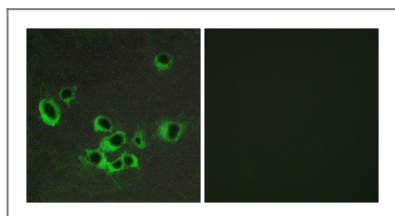
Validation Data



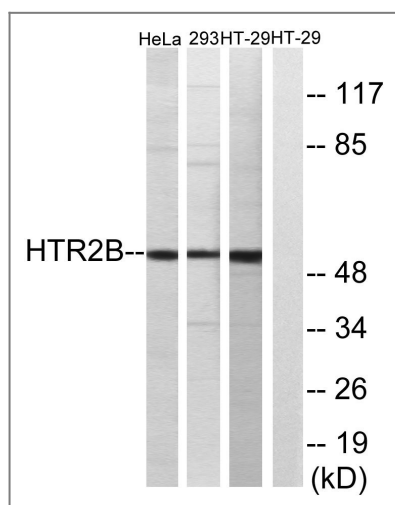
Dissecting the novel abilities of aripiprazole: The generation of anti-colorectal cancer effects by targeting Gαq via HTR2B. Changhua Hu WB Human FHC cell,HT29 cell,LoVo cell,SW480 cell,HCT116 cell



Western Blot analysis of various cells using SR-2B Polyclonal Antibody



Immunofluorescence analysis of COS7 cells, using HTR2B Antibody. The picture on the right is blocked with the synthesized peptide.



Western blot analysis of lysates from HT-29, 293, and HeLa cells, using HTR2B Antibody. The lane on the right is blocked with the synthesized peptide.

Contact information

Orders: order.cn@immunoway.com
 Support: support.cn@immunoway.com
 Telephone: 400-8787-807(China)
 Website: <http://www.immunoway.com.cn>
 Address: 2200 Ringwood Ave San Jose, CA 95131 USA



Please scan the QR code
 to access additional
 product information:
SR-2B Rabbit pAb

