

SR-2A Rabbit pAb

CatalogNo: YT4396

| Key Features

Host Species

- Rabbit

Reactivity

- Human

Applications

- IHC,IF,ELISA

MW

- 53kD (Calculated)

Isotype

- IgG

| Recommended Dilution Ratios

IHC 1:100-1:300

IF 1:200-1:1000

ELISA 1:5000

Not yet tested in other applications.

| Storage

Storage*

-15°C to -25°C/1 year(Do not lower than -25°C)

Formulation

Liquid in PBS containing 50% glycerol, 0.5% BSA and 0.02% sodium azide.

| Basic Information

Clonality

Polyclonal

| Immunogen Information

Immunogen

The antiserum was produced against synthesized peptide derived from human 5-HT-2A. AA range:422-471

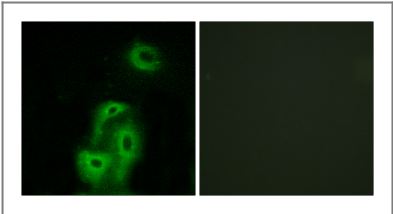
Specificity

SR-2A Polyclonal Antibody detects endogenous levels of SR-2A protein.

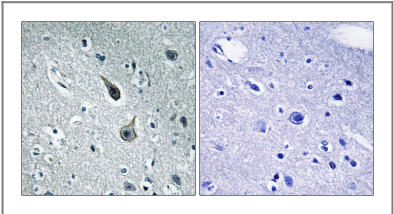
| Target Information

Gene name	HTR2A		
Protein Name	5-hydroxytryptamine receptor 2A		
	Organism	Gene ID	UniProt ID
	Human	3356 ;	P28223 ;
	Mouse		P35363 ;
Cellular Localization	Cell membrane ; Multi-pass membrane protein . Cell projection, dendrite . Cell projection, axon . Cytoplasmic vesicle . Membrane, caveola . Cell junction, synapse, presynapse .		
Tissue specificity	Detected in brain cortex (at protein level). Detected in blood platelets.		
Function	Domain:The PDZ domain-binding motif is involved in the interaction with INADL, CASK, APBA1, DLG1 and DLG4.,Function:This is one of the several different receptors for 5-hydroxytryptamine (serotonin), a biogenic hormone that functions as a neurotransmitter, a hormone, and a mitogen. This receptor mediates its action by association with G proteins that activate a phosphatidylinositol-calcium second messenger system. This receptor is involved in tracheal smooth muscle contraction, bronchoconstriction, and control of aldosterone production.,online information:The Singapore human mutation and polymorphism database,similarity:Belongs to the G-protein coupled receptor 1 family.,subcellular location:Localizes to the post-synaptic thickening of axo-dendritic synapses.,subunit:Interacts with MPDZ and INADL. May interact with MPP3, PRDX6, DLG4, DLG1, CASK, APBA1 and MAGI2.,		

| Validation Data



Immunofluorescence analysis of A549 cells, using 5-HT-2A Antibody. The picture on the right is blocked with the synthesized peptide.



Immunohistochemistry analysis of paraffin-embedded human brain tissue, using 5-HT-2A Antibody. The picture on the right is blocked with the synthesized peptide.

| Contact information

Orders: order.cn@immunoway.com
Support: support.cn@immunoway.com
Telephone: 400-8787-807(China)
Website: <http://www.immunoway.com.cn>
Address: 2200 Ringwood Ave San Jose, CA 95131 USA



Please scan the QR code
to access additional
product information:
SR-2A Rabbit pAb

For Research Use Only. Not for Use in Diagnostic Procedures.

[Antibody](#) | [ELISA Kits](#) | [Protein](#) | [Reagents](#)