

## Sp3/4 Rabbit pAb

CatalogNo: YT4376

### | Key Features

#### Host Species

- Rabbit

#### Reactivity

- Human, Mouse, Rat

#### Applications

- WB, IHC, IF, ELISA

#### MW

- 82kD (Observed)

#### Isotype

- IgG

### | Recommended Dilution Ratios

**WB 1:500-1:2000**

**IHC 1:100-1:300**

**IF 1:200-1:1000**

**ELISA 1:10000**

**Not yet tested in other applications.**

### | Storage

**Storage\*** -15°C to -25°C/1 year (Do not lower than -25°C)

**Formulation** Liquid in PBS containing 50% glycerol, 0.5% BSA and 0.02% sodium azide.

### | Basic Information

**Clonality** Polyclonal

### | Immunogen Information

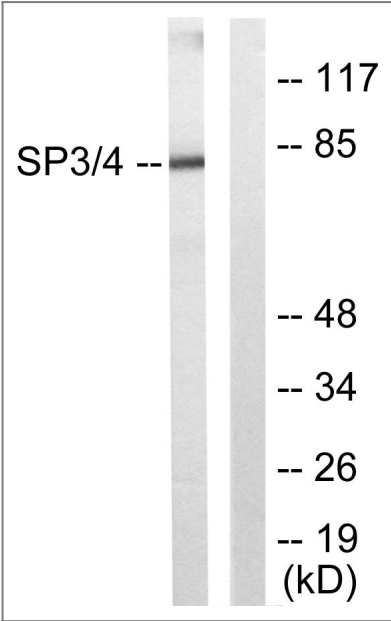
**Immunogen** The antiserum was produced against synthesized peptide derived from human SP3/4. AA range: 671-720

**Specificity** Sp3/4 Polyclonal Antibody detects endogenous levels of Sp3/4 protein.

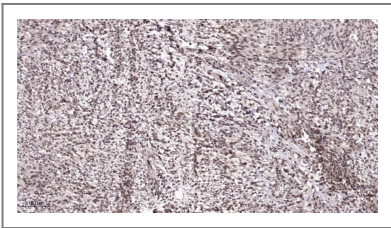
## | Target Information

Gene name	SP3/SP4		
Protein Name	Transcription factor Sp3/4		
	Organism	Gene ID	UniProt ID
	Human	<a href="#">6670</a> ; <a href="#">6671</a> ;	<a href="#">Q02447</a> ; <a href="#">Q02446</a> ;
	Mouse	<a href="#">20687</a> ; <a href="#">20688</a> ;	
Cellular Localization	Nucleus. Nucleus, PML body. Localizes to the nuclear periphery and in nuclear dots when sumoylated. Some localization in PML nuclear bodies.		
Tissue specificity	Ubiquitously expressed.		
Function	Function:Transcriptional factor that can act as an activator or repressor, probably in a isoform-specific manner. Binds to GT and GC boxes promoters elements.,similarity:Belongs to the Sp1 C2H2-type zinc-finger protein family.,similarity:Contains 3 C2H2-type zinc fingers.,tissue specificity:Ubiquitously expressed.,		

## | Validation Data



Western blot analysis of lysates from Jurkat cells, using SP3/4 Antibody. The lane on the right is blocked with the synthesized peptide.



Immunohistochemical analysis of paraffin-embedded human Colon cancer. 1, Antibody was diluted at 1:200(4° overnight). 2, Tris-EDTA,pH9.0 was used for antigen retrieval. 3,Secondary antibody was diluted at 1:200(room temperature, 45min).

## | Contact information

Orders: order.cn@immunoway.com  
Support: support.cn@immunoway.com  
Telephone: 400-8787-807(China)  
Website: <http://www.immunoway.com.cn>  
Address: 2200 Ringwood Ave San Jose, CA 95131 USA



Please scan the QR code  
to access additional  
product information:  
**Sp3/4 Rabbit pAb**

---

For Research Use Only. Not for Use in Diagnostic Procedures.

[Antibody](#) | [ELISA Kits](#) | [Protein](#) | [Reagents](#)