

## Sp2 Rabbit pAb

CatalogNo: YT4375

### Key Features

#### Host Species

- Rabbit

#### Reactivity

- Human, Mouse

#### Applications

- WB, IHC, IF, ELISA

#### MW

- 64kD (Observed)

#### Isotype

- IgG

### Recommended Dilution Ratios

WB 1:500-1:2000

IHC 1:100-1:300

ELISA 1:20000

IF 1:50-200

### Storage

#### Storage\*

-15°C to -25°C/1 year (Do not lower than -25°C)

#### Formulation

Liquid in PBS containing 50% glycerol, 0.5% BSA and 0.02% sodium azide.

### Basic Information

#### Clonality

Polyclonal

### Immunogen Information

#### Immunogen

The antiserum was produced against synthesized peptide derived from human SP2. AA range: 471-520

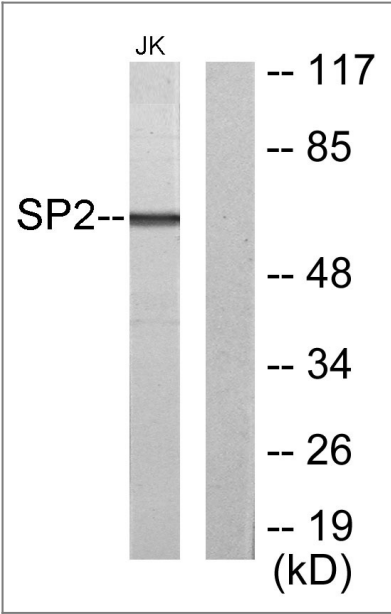
#### Specificity

Sp2 Polyclonal Antibody detects endogenous levels of Sp2 protein.

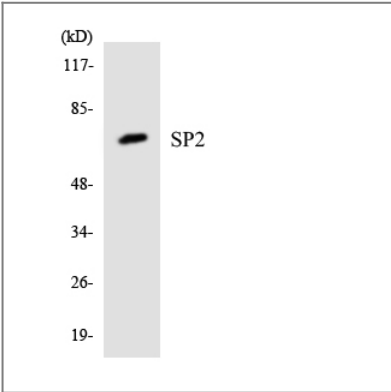
### Target Information

Gene name	SP2		
Protein Name	Transcription factor Sp2		
	Organism	Gene ID	UniProt ID
	Human	<a href="#">6668</a> ;	<a href="#">Q02086</a> ;
	Mouse	<a href="#">78912</a> ;	<a href="#">Q9D2H6</a> ;
Cellular Localization	Nucleus.		
Tissue specificity	Bone marrow,Brain,Lung,Lymph,Spleen,		
Function	Function: Binds to GC box promoters elements and selectively activates mRNA synthesis from genes that contain functional recognition sites.,similarity: Belongs to the Sp1 C2H2-type zinc-finger protein family.,similarity: Contains 3 C2H2-type zinc fingers.,		

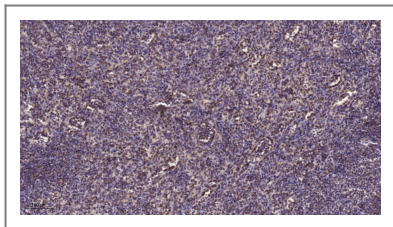
Validation Data



Western blot analysis of lysates from Jurkat cells, using SP2 Antibody. The lane on the right is blocked with the synthesized peptide.



Western blot analysis of the lysates from 293 cells using SP2 antibody.



Immunohistochemical analysis of paraffin-embedded human spleen. 1, Tris-EDTA, pH 9.0 was used for antigen retrieval. 2 Antibody was diluted at 1:200 (4° overnight). 3, Secondary antibody was diluted at 1:200 (room temperature, 45 min).

## Contact information

Orders: [order.cn@immunoway.com](mailto:order.cn@immunoway.com)  
Support: [support.cn@immunoway.com](mailto:support.cn@immunoway.com)  
Telephone: 400-8787-807 (China)  
Website: <http://www.immunoway.com.cn>  
Address: 2200 Ringwood Ave San Jose, CA 95131 USA



Please scan the QR code to access additional product information:  
**Sp2 Rabbit pAb**

For Research Use Only. Not for Use in Diagnostic Procedures.

[Antibody](#) | [ELISA Kits](#) | [Protein](#) | [Reagents](#)