

Sox-12 Rabbit pAb

CatalogNo: YT4368

Key Features

Host Species

- Rabbit

Reactivity

- Human, Mouse

Applications

- IHC, IF, ELISA

MW

- 34kD (Calculated)

Isotype

- IgG

Recommended Dilution Ratios

IHC 1:100-1:300

ELISA 1:20000

IF 1:50-200

Storage

Storage* -15°C to -25°C/1 year (Do not lower than -25°C)

Formulation Liquid in PBS containing 50% glycerol, 0.5% BSA and 0.02% sodium azide.

Basic Information

Clonality Polyclonal

Immunogen Information

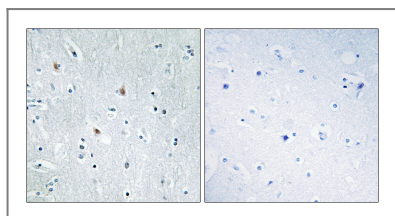
Immunogen The antiserum was produced against synthesized peptide derived from human SOX12. AA range: 71-120

Specificity Sox-12 Polyclonal Antibody detects endogenous levels of Sox-12 protein.

Target Information

Gene name	SOX12		
Protein Name	Transcription factor SOX-12		
	Organism	Gene ID	UniProt ID
	Human	6666 ;	O15370 ;
	Mouse	20667 ;	Q04890 ;
Cellular Localization	Nucleus .		
Tissue specificity	Expressed most abundantly in the CNS (PubMed:9215677). Expressed in the heart, pancreas, thymus, testis and ovary (PubMed:9215677). Weakly expressed in brain, placenta, lung, liver, skeletal muscle, kidney, spleen, prostate, small intestine, colon, and peripheral blood lymphocytes (PubMed:9215677).		
Function	Function: Binds to the sequence 5'-AACAAAT-3'. similarity: Contains 1 HMG box DNA-binding domain. tissue specificity: Expressed most abundantly in the CNS. Also expressed in fetal brain and kidney and adult heart, pancreas, testis and ovary. Other tissues were only weakly positive.		

Validation Data



Immunohistochemistry analysis of paraffin-embedded human brain tissue, using SOX12 Antibody. The picture on the right is blocked with the synthesized peptide.

Contact information

Orders: order.cn@immunoway.com
 Support: support.cn@immunoway.com
 Telephone: 400-8787-807(China)
 Website: <http://www.immunoway.com.cn>
 Address: 2200 Ringwood Ave San Jose, CA 95131 USA



Please scan the QR code to access additional product information:
Sox-12 Rabbit pAb