

SnoN Rabbit pAb

CatalogNo: YT4356

| Key Features

Host Species

- Rabbit

Reactivity

- Human, Mouse

Applications

- WB, IHC, IF, ELISA

MW

- 77kD (Observed)

Isotype

- IgG

| Recommended Dilution Ratios

WB 1:500-1:2000

IHC 1:100-1:300

ELISA 1:40000

IF 1:50-200

| Storage

Storage*

-15°C to -25°C/1 year (Do not lower than -25°C)

Formulation

Liquid in PBS containing 50% glycerol, 0.5% BSA and 0.02% sodium azide.

| Basic Information

Clonality

Polyclonal

| Immunogen Information

Immunogen

The antiserum was produced against synthesized peptide derived from human SKIL. AA range: 616-665

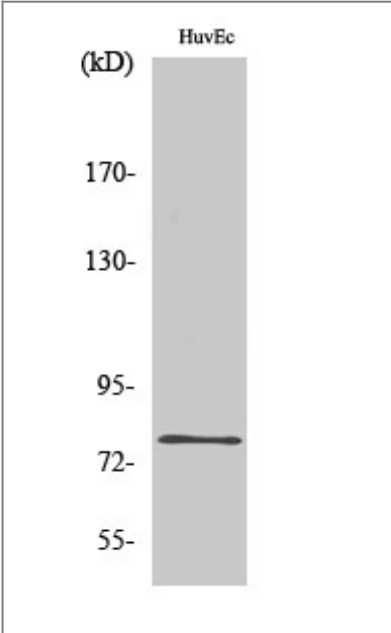
Specificity

SnoN Polyclonal Antibody detects endogenous levels of SnoN protein.

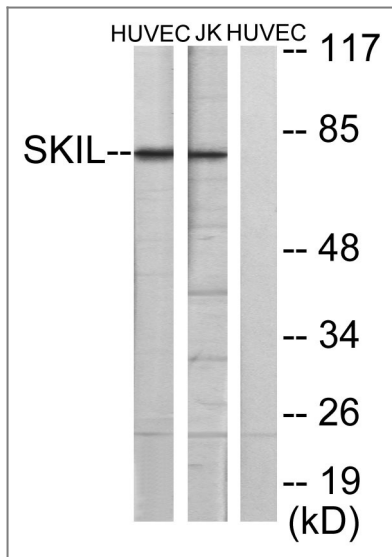
| Target Information

Gene name	SKIL		
Protein Name	Ski-like protein		
	Organism	Gene ID	UniProt ID
	Human	6498 ;	P12757 ;
	Mouse	20482 ;	Q60665 ;
Cellular Localization	acrosomal vesicle,nucleus,nucleoplasm,transcription factor complex,cytoplasm,PML body,transcriptional repressor complex,protein complex,		
Tissue specificity	Isoform SNON and isoform SNOA are widely expressed. Highest expression is found in skeletal muscle, followed by placenta and lung. Lowest expression in heart, brain and pancreas. Isoform SNOI expression is restricted to skeletal muscle.		
Function	Function:May have regulatory role in cell division or differentiation in response to extracellular signals.,similarity:Belongs to the SKI family.,subunit:Interacts with SMAD2, SMAD3 and RNF111.,tissue specificity:SNON and SNOA isoforms are widely expressed. Highest expression is found in skeletal muscle, followed by placenta and lung. Lowest expression in heart, brain and pancreas. Expression of isoform SNOI is restricted to skeletal muscle.,		

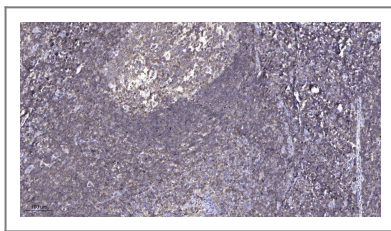
Validation Data



Western Blot analysis of various cells using SnoN Polyclonal Antibody diluted at 1:1000 cells nucleus extracted by Minute TM Cytoplasmic and Nuclear Fractionation kit (SC-003,Inventbiotech,MN,USA).



Western blot analysis of lysates from HUVEC and Jurkat cells, using SKIL Antibody. The lane on the right is blocked with the synthesized peptide.



Immunohistochemical analysis of paraffin-embedded human tonsil. 1, Antibody was diluted at 1:200(4° overnight). 2, Tris-EDTA,pH9.0 was used for antigen retrieval. 3,Secondary antibody was diluted at 1:200(room temperature, 45min).

Contact information

Orders: order.cn@immunoway.com
 Support: support.cn@immunoway.com
 Telephone: 400-8787-807(China)
 Website: <http://www.immunoway.com.cn>
 Address: 2200 Ringwood Ave San Jose, CA 95131 USA



Please scan the QR code to access additional product information:
SnoN Rabbit pAb

For Research Use Only. Not for Use in Diagnostic Procedures.

[Antibody](#) | [ELISA Kits](#) | [Protein](#) | [Reagents](#)