

## Skp1 Rabbit pAb

CatalogNo: YT4310

### Key Features

#### Host Species

- Rabbit

#### Reactivity

- Human, Mouse, Rat, Monkey

#### Applications

- WB, IHC, IF, ELISA

#### MW

- 19kD (Observed)

#### Isotype

- IgG

### Storage

**Storage\*** -15°C to -25°C/1 year (Do not lower than -25°C)

**Formulation** Liquid in PBS containing 50% glycerol, 0.5% BSA and 0.02% sodium azide.

### Recommended Dilution Ratios

**WB 1:500-1:2000**

**IHC 1:100-1:300**

**ELISA 1:5000**

**IF 1:50-200**

### Basic Information

**Clonality** Polyclonal

### Immunogen Information

**Immunogen** The antiserum was produced against synthesized peptide derived from human SKP1A/p19. AA range:41-90

**Specificity** Skp1 Polyclonal Antibody detects endogenous levels of Skp1 protein.

### Target Information

**Gene name** SKP1

**Protein Name** S-phase kinase-associated protein 1

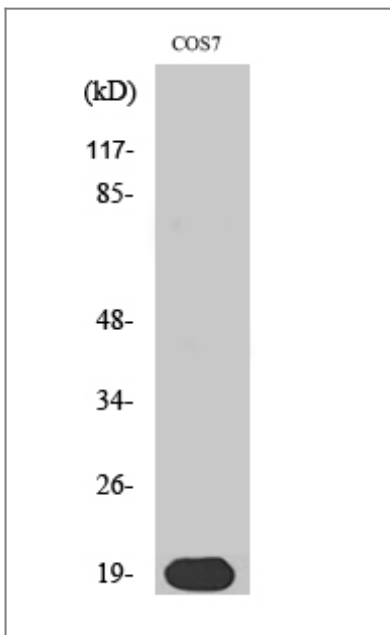
Organism	Gene ID	UniProt ID
Human	<a href="#">6500;</a>	<a href="#">P63208;</a>
Mouse	<a href="#">21402;</a>	<a href="#">Q9WTX5;</a>
Rat	<a href="#">287280;</a>	<a href="#">Q6PEC4;</a>

**Cellular Localization** nucleus,nucleoplasm,cytoplasm,centrosome,cytosol,SCF ubiquitin ligase complex,Cul7-RING ubiquitin ligase complex,PcG protein complex,extracellular exosome,

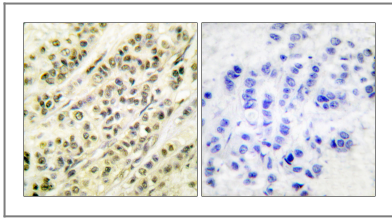
**Tissue specificity** Erythrocyte,Inner ear,Lung,Skin,Uterus,

**Function** Function:Essential component of the SCF (SKP1-CUL1-F-box protein) ubiquitin ligase complex, which mediates the ubiquitination of proteins involved in cell cycle progression, signal transduction and transcription. In the SCF complex, serves as an adapter that links the F-box protein to CUL1.,pathway:Protein modification; protein ubiquitination.,similarity:Belongs to the SKP1 family.,subunit:Interacts directly with CUL1 and F-box proteins, such as BTRC and SKP2, in the SCF complex. Interacts with the cyclin A/CDK2 complex. Part of a SCF-like complex consisting of CUL7, RBX1, SKP1 and FBXW8. Component of a E3 ubiquitin ligase complex containing UBE2D1, SIAH1, CACYBP/SIP, SKP1, APC and TBL1X.,

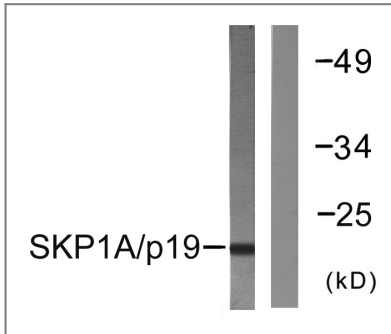
## Validation Data



Western Blot analysis of various cells using Skp1 p19 Polyclonal Antibody



Immunohistochemistry analysis of paraffin-embedded human breast carcinoma tissue, using SKP1A/p19 Antibody. The picture on the right is blocked with the synthesized peptide.



Western blot analysis of lysates from COS7 cells, using SKP1A/p19 Antibody. The lane on the right is blocked with the synthesized peptide.

## Contact information

Orders: [order.cn@immunoway.com](mailto:order.cn@immunoway.com)  
Support: [support.cn@immunoway.com](mailto:support.cn@immunoway.com)  
Telephone: 400-8787-807(China)  
Website: <http://www.immunoway.com.cn>  
Address: 2200 Ringwood Ave San Jose, CA 95131 USA



Please scan the QR code to access additional product information:  
**Skp1 Rabbit pAb**

For Research Use Only. Not for Use in Diagnostic Procedures.

[Antibody](#) | [ELISA Kits](#) | [Protein](#) | [Reagents](#)