

SgK288 Rabbit pAb

CatalogNo: YT4272

Key Features

Host Species

- Rabbit

Reactivity

- Human, Mouse

Applications

- WB, ELISA

MW

- 84kD (Observed)

Isotype

- IgG

Recommended Dilution Ratios

WB 1:500-1:2000

ELISA 1:20000

Not yet tested in other applications.

Storage

Storage*

-15°C to -25°C/1 year (Do not lower than -25°C)

Formulation

Liquid in PBS containing 50% glycerol, 0.5% BSA and 0.02% sodium azide.

Basic Information

Clonality

Polyclonal

Immunogen Information

Immunogen

The antiserum was produced against synthesized peptide derived from human ANKK1. AA range: 321-370

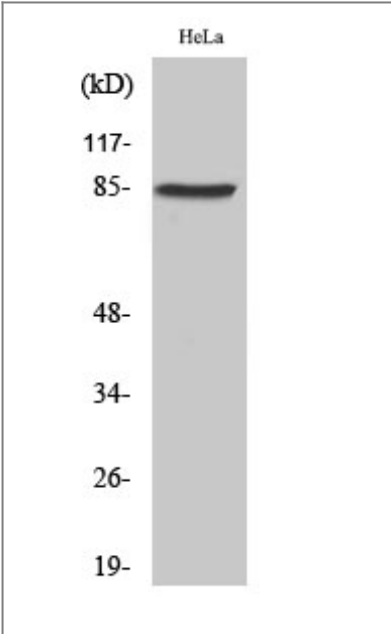
Specificity

SgK288 Polyclonal Antibody detects endogenous levels of SgK288 protein.

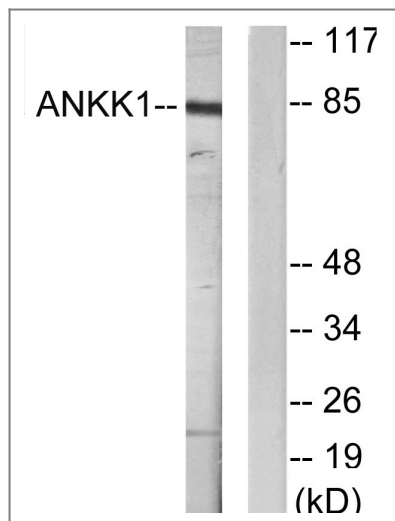
Target Information

Gene name	ANKK1		
Protein Name	Ankyrin repeat and protein kinase domain-containing protein 1		
	Organism	Gene ID	UniProt ID
	Human	255239 ;	Q8NFD2 ;
	Mouse		Q8BZ25 ;
Tissue specificity	Highly expressed in brain and weakly expressed in placenta and spinal cord.		
Function	Catalytic activity:ATP + a protein = ADP + a phosphoprotein.,similarity:Belongs to the protein kinase superfamily. TKL Ser/Thr protein kinase family.,similarity:Contains 1 protein kinase domain.,similarity:Contains 12 ANK repeats.,tissue specificity:Highly expressed in brain and weakly expressed in placenta and spinal cord.,		

| Validation Data



Western Blot analysis of various cells using SgK288 Polyclonal Antibody



Western blot analysis of lysates from HeLa cells, using ANKK1 Antibody. The lane on the right is blocked with the synthesized peptide.

Contact information

Orders: order.cn@immunoway.com
 Support: support.cn@immunoway.com
 Telephone: 400-8787-807(China)
 Website: <http://www.immunoway.com.cn>
 Address: 2200 Ringwood Ave San Jose, CA 95131 USA



Please scan the QR code to access additional product information:
SgK288 Rabbit pAb

For Research Use Only. Not for Use in Diagnostic Procedures.

[Antibody](#) | [ELISA Kits](#) | [Protein](#) | [Reagents](#)