

SerpinA6 Rabbit pAb

CatalogNo: YT4259

Key Features

Host Species

- Rabbit

Reactivity

- Human, Mouse, Rat

Applications

- IHC, IF, ELISA

MW

- 45kD (Calculated)

Isotype

- IgG

Recommended Dilution Ratios

IHC 1:100-1:300

ELISA 1:5000

IF 1:50-200

Storage

Storage* -15°C to -25°C/1 year (Do not lower than -25°C)

Formulation Liquid in PBS containing 50% glycerol, 0.5% BSA and 0.02% sodium azide.

Basic Information

Clonality Polyclonal

Immunogen Information

Immunogen Synthesized peptide derived from the Internal region of human SerpinA6.

Specificity SerpinA6 Polyclonal Antibody detects endogenous levels of SerpinA6 protein.

Target Information

Gene name SERPINA6

Protein Name Corticosteroid-binding globulin

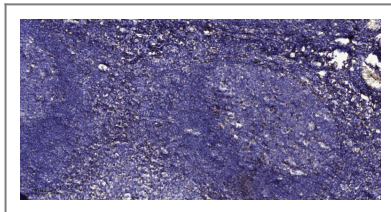
Organism	Gene ID	UniProt ID
Human	866;	P08185;
Mouse		Q06770;

Cellular Localization Secreted.

Tissue specificity Plasma; synthesized in liver. Has also been identified in a number of glucocorticoid responsive cells.

Function Disease:Defects in SERPINA6 are a cause of corticosteroid-binding globulin deficiency (CBG deficiency) [MIM:611489]. CBG deficiency is an extremely rare hereditary disorder characterized by reduced corticosteroid-binding capacity with normal or low plasma corticosteroid-binding globulin concentration, and normal or low basal cortisol levels associated with hypo/hypertension and muscle fatigue.,Function:Major transport protein for glucocorticoids and progestins in the blood of almost all vertebrate species.,online information:Transcortin entry,PTM:Glycosylation in position Asn-260 is needed for steroid binding.,PTM:N-glycosylated; binds 5 oligosaccharide chains.,similarity:Belongs to the serpin family.,tissue specificity:Plasma; synthesized in liver. Has also been identified in a number of glucocorticoid responsive cells.,

Validation Data



Immunohistochemical analysis of paraffin-embedded human tonsil. 1, Antibody was diluted at 1:200(4° overnight). 2, Tris-EDTA,pH9.0 was used for antigen retrieval. 3,Secondary antibody was diluted at 1:200(room temperature, 30min).

Contact information

Orders: order.cn@immunoway.com
Support: support.cn@immunoway.com
Telephone: 400-8787-807(China)
Website: <http://www.immunoway.com.cn>
Address: 2200 Ringwood Ave San Jose, CA 95131 USA



Please scan the QR code to access additional product information:
SerpinA6 Rabbit pAb