

Serinc1 Rabbit pAb

CatalogNo: YT4255

| Key Features

Host Species

- Rabbit

Reactivity

- Human, Mouse, Rat

Applications

- WB, IHC, IF, ELISA

MW

- 48kD (Observed)

Isotype

- IgG

| Recommended Dilution Ratios

WB 1:500-1:2000

IHC 1:100-1:300

IF 1:200-1:1000

ELISA 1:20000

Not yet tested in other applications.

| Storage

Storage* -15°C to -25°C/1 year (Do not lower than -25°C)

Formulation Liquid in PBS containing 50% glycerol, 0.5% BSA and 0.02% sodium azide.

| Basic Information

Clonality Polyclonal

| Immunogen Information

Immunogen The antiserum was produced against synthesized peptide derived from human SERC1. AA range: 381-430

Specificity Serinc1 Polyclonal Antibody detects endogenous levels of Serinc1 protein.

Target Information

Gene name SERINC1

Protein Name Serine incorporator 1

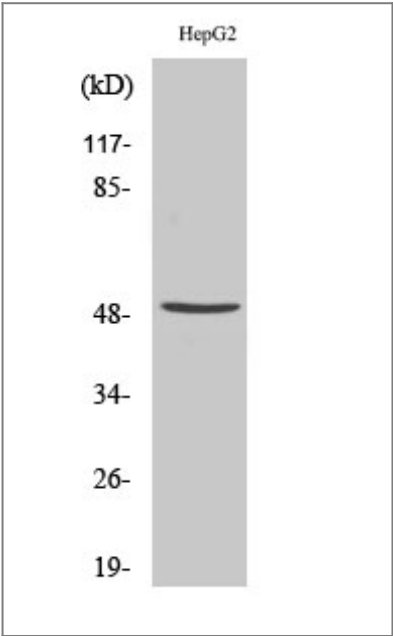
Organism	Gene ID	UniProt ID
Human	57515;	Q9NRX5;
Mouse	56442;	Q9QZI8;
Rat	294421;	Q7TNK0;

Cellular Localization Endoplasmic reticulum membrane ; Multi-pass membrane protein .

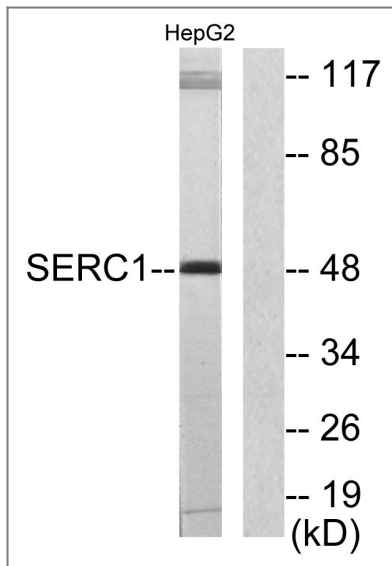
Tissue specificity Adrenal gland,Brain,Epithelium,Liver,Testis,

Function Function:Enhances the incorporation of serine into phosphatidylserine and sphingolipids.,similarity:Belongs to the TDE1 family.,subunit:Interacts with SPTLC1.,

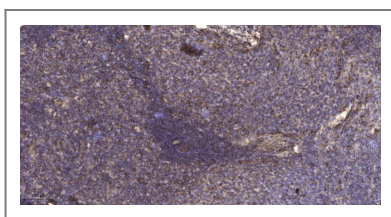
Validation Data



Western Blot analysis of various cells using Serinc1 Polyclonal Antibody



Western blot analysis of lysates from HepG2 cells, using SERC1 Antibody. The lane on the right is blocked with the synthesized peptide.



Immunohistochemical analysis of paraffin-embedded human cervical carcinoma. 1, Antibody was diluted at 1:200(4° overnight). 2, Tris-EDTA,pH9.0 was used for antigen retrieval. 3,Secondary antibody was diluted at 1:200(room temperature, 45min).

Contact information

Orders: order.cn@immunoway.com
 Support: support.cn@immunoway.com
 Telephone: 400-8787-807(China)
 Website: <http://www.immunoway.com.cn>
 Address: 2200 Ringwood Ave San Jose, CA 95131 USA



Please scan the QR code to access additional product information:
Serinc1 Rabbit pAb

For Research Use Only. Not for Use in Diagnostic Procedures.

[Antibody](#) | [ELISA Kits](#) | [Protein](#) | [Reagents](#)