

Septin 5 Rabbit pAb

CatalogNo: YT4249

Key Features

Host Species

- Rabbit

Reactivity

- Human, Mouse, Rat

Applications

- WB, IHC

MW

- 42kD (Observed)

Isotype

- IgG

Recommended Dilution Ratios

WB 1:500-2000

IHC 1:50-300

Storage

Storage*

-15°C to -25°C/1 year (Do not lower than -25°C)

Formulation

Liquid in PBS containing 50% glycerol, 0.5% BSA and 0.02% sodium azide.

Basic Information

Clonality

Polyclonal

Immunogen Information

Immunogen

Synthesized peptide derived from Septin 5 . at AA range: 180-260

Specificity

Septin 5 Polyclonal Antibody detects endogenous levels of Septin 5 protein.

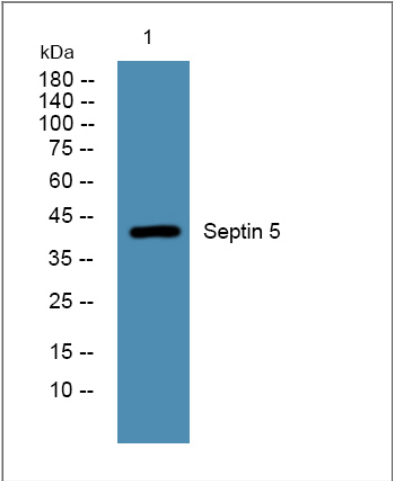
Target Information

Gene name

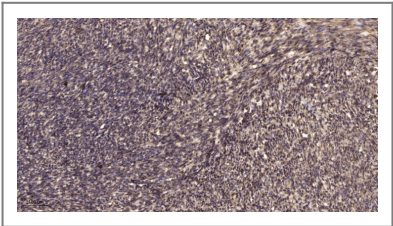
SEPT5

Protein Name	Septin-5		
	Organism	Gene ID	UniProt ID
	Human	5413 ;	Q99719 ;
	Mouse	18951 ;	Q9Z2Q6 ;
	Rat	116728 ;	Q9JJM9 ;
Cellular Localization	Cytoplasm . Cytoplasm, cytoskeleton . In platelets, found in areas surrounding alpha-granules.		
Tissue specificity	Expressed at high levels in the CNS, as well as in heart and platelets (at protein level).		
Function	Function:Involved in cytokinesis .,similarity:Belongs to the septin family.,subunit:May assemble into a multicomponent structure.,		

| Validation Data



Western blot analysis of lysates from DU145 cells, primary antibody was diluted at 1:1000, 4°over night



Immunohistochemical analysis of paraffin-embedded human uterus. 1, Antibody was diluted at 1:200(4° overnight). 2, Tris-EDTA,pH9.0 was used for antigen retrieval. 3,Secondary antibody was diluted at 1:200(room temperature, 45min).

| Contact information

Orders: order.cn@immunoway.com
Support: support.cn@immunoway.com
Telephone: 400-8787-807(China)
Website: <http://www.immunoway.com.cn>
Address: 2200 Ringwood Ave San Jose, CA 95131 USA



Please scan the QR code
to access additional
product information:
Septin 5 Rabbit pAb

For Research Use Only. Not for Use in Diagnostic Procedures.

[Antibody](#) | [ELISA Kits](#) | [Protein](#) | [Reagents](#)