

Septin 1 Rabbit pAb

CatalogNo: YT4245

Key Features

Host Species

- Rabbit

Reactivity

- Human, Mouse, Rat

Applications

- WB, IHC, IF, ELISA

MW

- 41kD (Observed)

Isotype

- IgG

Recommended Dilution Ratios

WB 1:500-1:2000

IHC 1:100-1:300

ELISA 1:20000

IF 1:50-200

Storage

Storage*

-15°C to -25°C/1 year (Do not lower than -25°C)

Formulation

Liquid in PBS containing 50% glycerol, 0.5% BSA and 0.02% sodium azide.

Basic Information

Clonality

Polyclonal

Immunogen Information

Immunogen

The antiserum was produced against synthesized peptide derived from human SEPT1. AA range: 181-230

Specificity

Septin 1 Polyclonal Antibody detects endogenous levels of Septin 1 protein.

Target Information

Gene name SEPT1

Protein Name Septin-1

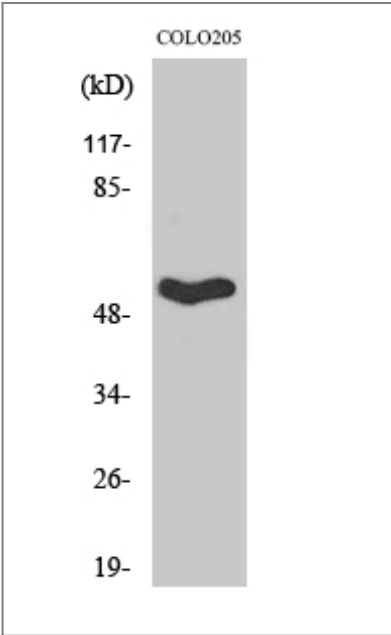
Organism	Gene ID	UniProt ID
Human	1731 ;	Q8WYJ6 ;
Mouse	54204 ;	P42209 ;
Rat	293507 ;	Q5EB96 ;

Cellular Localization Cytoplasm . Cytoplasm, cytoskeleton . Cytoplasm, cytoskeleton, microtubule organizing center, centrosome. Midbody. Remains at the centrosomes and the nearby microtubules throughout mitosis. Localizes to the midbody during cytokinesis.

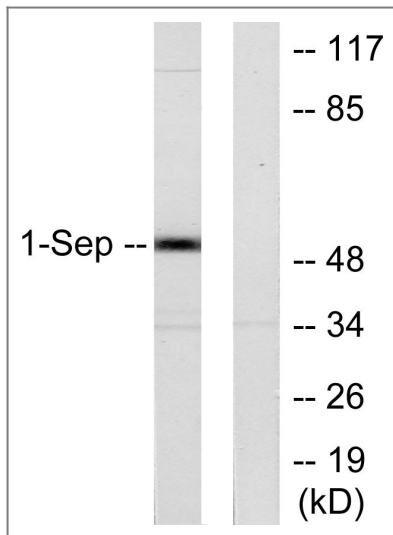
Tissue specificity Expressed at high levels in lymphoid and hematopoietic tissues.

Function Function:Involved in cytokinesis .,similarity:Belongs to the septin family.,subunit:May assemble into a multicomponent structure.,

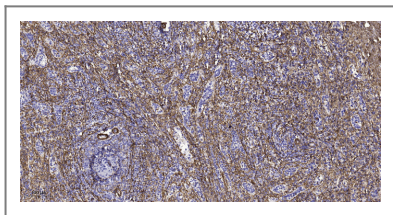
| Validation Data



Western Blot analysis of various cells using Septin 1 Polyclonal Antibody



Western blot analysis of lysates from Jurkat cells, using SEPT1 Antibody. The lane on the right is blocked with the synthesized peptide.



Immunohistochemical analysis of paraffin-embedded human spleen tissue. 1, primary Antibody was diluted at 1:200 (4° overnight). 2, Sodium citrate pH 6.0 was used for antigen retrieval (>98°C, 20min). 3, Secondary antibody was diluted at 1:200

Contact information

Orders: order.cn@immunoway.com
 Support: support.cn@immunoway.com
 Telephone: 400-8787-807 (China)
 Website: <http://www.immunoway.com.cn>
 Address: 2200 Ringwood Ave San Jose, CA 95131 USA



Please scan the QR code to access additional product information:
Septin 1 Rabbit pAb

For Research Use Only. Not for Use in Diagnostic Procedures.

[Antibody](#) | [ELISA Kits](#) | [Protein](#) | [Reagents](#)