

SENP8 Rabbit pAb

CatalogNo: YT4242

Key Features

Host Species

- Rabbit

Reactivity

- Human, Mouse, Rat

Applications

- WB, IHC, IF, ELISA

MW

- 27kD (Observed)

Isotype

- IgG

Recommended Dilution Ratios

WB 1:500-1:2000

IHC 1:100-1:300

ELISA 1:10000

IF 1:50-200

Storage

Storage*

-15°C to -25°C/1 year (Do not lower than -25°C)

Formulation

Liquid in PBS containing 50% glycerol, 0.5% BSA and 0.02% sodium azide.

Basic Information

Clonality

Polyclonal

Immunogen Information

Immunogen

The antiserum was produced against synthesized peptide derived from human SENP8. AA range: 161-210

Specificity

SENP8 Polyclonal Antibody detects endogenous levels of SENP8 protein.

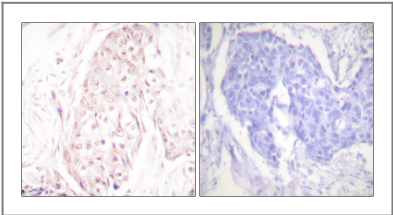
Target Information

Gene name	SENP8		
Protein Name	Sentrin-specific protease 8		
	Organism	Gene ID	UniProt ID
	Human	123228 ;	Q96LD8 ;
	Mouse	71599 ;	Q9D2Z4 ;
	Rat	315723 ;	Q5FVJ8 ;

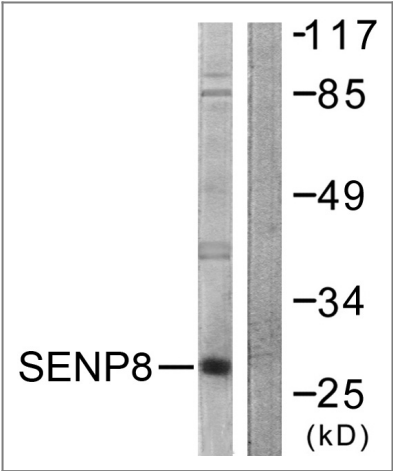
Tissue specificity Broadly expressed, with highest levels in kidney and pancreas.

Function Function:Protease that catalyzes two essential functions in the NEDD8 pathway: processing of full-length NEDD8 to its mature form and deconjugation of NEDD8 from targeted proteins such as cullins or p53.,similarity:Belongs to the peptidase C48 family.,tissue specificity:Broadly expressed, with highest levels in kidney and pancreas.,

Validation Data



Immunohistochemistry analysis of paraffin-embedded human breast carcinoma tissue, using SENP8 Antibody. The picture on the right is blocked with the synthesized peptide.



Western blot analysis of lysates from HUVEC cells, using SENP8 Antibody. The lane on the right is blocked with the synthesized peptide.

Contact information

Orders: order.cn@immunoway.com
Support: support.cn@immunoway.com
Telephone: 400-8787-807(China)
Website: <http://www.immunoway.com.cn>
Address: 2200 Ringwood Ave San Jose, CA 95131 USA



Please scan the QR code
to access additional
product information:
SENP8 Rabbit pAb

For Research Use Only. Not for Use in Diagnostic Procedures.

[Antibody](#) | [ELISA Kits](#) | [Protein](#) | [Reagents](#)