

SENP3 Rabbit pAb

CatalogNo: YT4238

Key Features

Host Species

- Rabbit

Reactivity

- Human, Mouse

Applications

- WB, IHC, IF, ELISA

MW

- 80kD (Observed)

Isotype

- IgG

Recommended Dilution Ratios

WB 1:500-1:2000

IHC 1:100-1:300

ELISA 1:5000

IF 1:50-200

Storage

Storage*

-15°C to -25°C/1 year (Do not lower than -25°C)

Formulation

Liquid in PBS containing 50% glycerol, 0.5% BSA and 0.02% sodium azide.

Basic Information

Clonality

Polyclonal

Immunogen Information

Immunogen

The antiserum was produced against synthesized peptide derived from human SENP3. AA range: 10-59

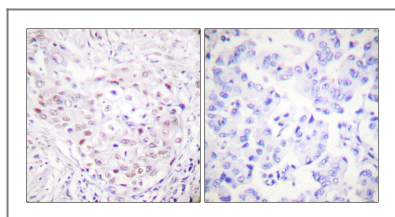
Specificity

SENP3 Polyclonal Antibody detects endogenous levels of SENP3 protein.

Target Information

Gene name	SENP3		
Protein Name	Sentrin-specific protease 3		
	Organism	Gene ID	UniProt ID
	Human	26168;	Q9H4L4;
	Mouse	80886;	Q9EP97;
Cellular Localization	Nucleus, nucleolus . Nucleus, nucleoplasm . Cytoplasm . Redistributes between the nucleolus and the nucleoplasm in response to mild oxidative stress (PubMed:19680224). Mainly found in the nucleoplasm, with low levels detected in the cytoplasmic and chromatin fractions (By similarity). .		
Tissue specificity	Epithelium,Lymph,Melanoma,Uterus,		
Function	Function:Protease that releases SUMO2 and SUMO3 monomers from sumoylated substrates, but has only weak activity against SUMO1 conjugates. Deconjugates SUMO2 from MEF2D, which increases its transcriptional activation capability.,similarity:Belongs to the peptidase C48 family.,subunit:Binds to UBL1 and SMT3H1.,		

Validation Data



Immunohistochemistry analysis of paraffin-embedded human breast carcinoma tissue, using SENP3 Antibody. The picture on the right is blocked with the synthesized peptide.

Contact information

Orders: order.cn@immunoway.com
 Support: support.cn@immunoway.com
 Telephone: 400-8787-807(China)
 Website: <http://www.immunoway.com.cn>
 Address: 2200 Ringwood Ave San Jose, CA 95131 USA



Please scan the QR code to access additional product information:
SENP3 Rabbit pAb

For Research Use Only. Not for Use in Diagnostic Procedures.

[Antibody](#) | [ELISA Kits](#) | [Protein](#) | [Reagents](#)